

## Product datasheet for **TA335103**

### ZP1 Rabbit Polyclonal Antibody

#### Product data:

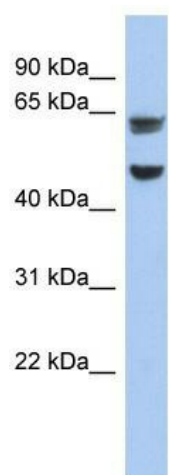
Product Type:	Primary Antibodies
Applications:	WB
Recommended Dilution:	WB
Reactivity:	Human
Host:	Rabbit
Isotype:	IgG
Clonality:	Polyclonal
Immunogen:	The immunogen for anti-ZP1 antibody: synthetic peptide directed towards the middle region of human ZP1. Synthetic peptide located within the following region: PVGFEDSYGQEPTLGPTDSNGNSSLRPLLWAVLLLPAVALVLGFGVFGVL
Formulation:	Liquid. Purified antibody supplied in 1x PBS buffer with 0.09% (w/v) sodium azide and 2% sucrose.
Purification:	Affinity Purified
Conjugation:	Unconjugated
Storage:	Store at -20°C as received.
Stability:	Stable for 12 months from date of receipt.
Predicted Protein Size:	70 kDa
Gene Name:	zona pellucida glycoprotein 1
Database Link:	<a href="#">NP_997224</a> <a href="#">Entrez Gene 22917 Human</a> <a href="#">P60852</a>
Background:	The mammalian zona pellucida, which mediates species-specific sperm binding, induction of the acrosome reaction and prevents post-fertilization polyspermy, is composed of three to four glycoproteins, ZP1, ZP2, ZP3, and ZP4. ZP1 ensures the structural integrity of the zona pellucida.
Synonyms:	HEL163; OOMD; OOMD1
Note:	Immunogen Sequence Homology: Human: 100%



[View online »](#)

Protein Families: Transmembrane

### Product images:



WB Suggested Anti-ZP1 Antibody Titration: 0.2-1 ug/ml; ELISA Titer: 1:62500; Positive Control: 293T cell lysate