

## Product datasheet for **TA335101**

### IPP Rabbit Polyclonal Antibody

#### Product data:

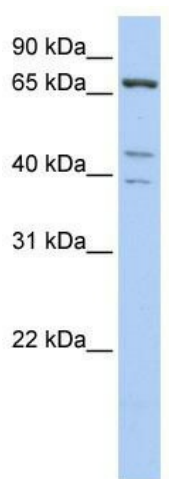
|                         |  |
|-------------------------|--|
| Product Type:           | Primary Antibodies   |
| Applications:           | WB   |
| Recommended Dilution:   | WB   |
| Reactivity:             | Human  |
| Host:                   | Rabbit   |
| Isotype:                | IgG  |
| Clonality:              | Polyclonal   |
| Immunogen:              | The immunogen for anti-IPP antibody: synthetic peptide directed towards the C terminal of human IPP. Synthetic peptide located within the following region:<br>EMQGLIYVIGGISNEGIELRSFEVYDPLSKRWSPLPPMGTRRAYLGVAAL  |
| Formulation:            | Liquid. Purified antibody supplied in 1x PBS buffer with 0.09% (w/v) sodium azide and 2% sucrose.<br><i>Note that this product is shipped as lyophilized powder to China customers.</i>  |
| Purification:           | Affinity Purified  |
| Conjugation:            | Unconjugated   |
| Storage:                | Store at -20°C as received.  |
| Stability:              | Stable for 12 months from date of receipt.   |
| Predicted Protein Size: | 65 kDa   |
| Gene Name:              | intracisternal A particle-promoted polypeptide   |
| Database Link:          | <a href="#">NP_005888</a><br><a href="#">Entrez Gene 3652 Human</a><br><a href="#">Q9Y573</a>  |
| Background:             | IPP is a member of the kelch family of proteins, which is characterized by a 50 amino acid repeat which interacts with actin. The protein encoded by this gene is a member of the kelch family of proteins, which is characterized by a 50 amino acid repeat which interacts with actin. Transcript variants have been described but their full-length nature has not been determined. |
| Synonyms:               | KLHL27   |



[View online »](#)

**Note:** Immunogen Sequence Homology: Dog: 100%; Pig: 100%; Rat: 100%; Horse: 100%; Human: 100%; Mouse: 100%; Bovine: 93%; Guinea pig: 93%; Zebrafish: 79%

**Product images:**



WB Suggested Anti-IPP Antibody Titration: 0.2-1 ug/ml; ELISA Titer: 1: 1562500; Positive Control: Hela cell lysate