

Product datasheet for **TA335100**

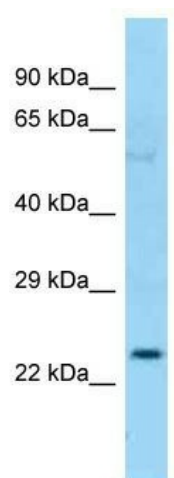
CFHL2 (CFHR2) Rabbit Polyclonal Antibody

Product data:

Product Type:	Primary Antibodies
Applications:	WB
Recommended Dilution:	WB
Reactivity:	Human
Host:	Rabbit
Isotype:	IgG
Clonality:	Polyclonal
Immunogen:	The immunogen for anti-CFHR2 antibody is: synthetic peptide directed towards the C-terminal region of Human CFHR2. Synthetic peptide located within the following region: KLKWTNQKLYSRTGDIVEFVCKSGYHPTKSHSFRAMCQNGKLVYPSCEE
Formulation:	Liquid. Purified antibody supplied in 1x PBS buffer with 0.09% (w/v) sodium azide and 2% sucrose. <i>Note that this product is shipped as lyophilized powder to China customers.</i>
Purification:	Affinity Purified
Conjugation:	Unconjugated
Storage:	Store at -20°C as received.
Stability:	Stable for 12 months from date of receipt.
Predicted Protein Size:	26 kDa
Gene Name:	complement factor H related 2
Database Link:	NP_005657 Entrez Gene 3080 Human P36980
Background:	CFHR2 might be involved in complement regulation. It can associate with lipoproteins and may play a role in lipid metabolism.
Synonyms:	CFHL2; FHR2; HFL3
Note:	Immunogen Sequence Homology: Human: 100%; Rabbit: 82%
Protein Families:	Secreted Protein



[View online »](#)

Product images:

Host: Rabbit; Target Name: CFHR2; Sample Tissue: OVCAR-3 Whole cell lysates; Antibody Dilution: 1.0 ug/ml; CFHR2 is supported by BioGPS gene expression data to be expressed in OVCAR3