

Product datasheet for **TA335099**

MAB21L1 Rabbit Polyclonal Antibody

Product data:

Product Type:	Primary Antibodies
Applications:	WB
Recommended Dilution:	WB
Reactivity:	Human
Host:	Rabbit
Isotype:	IgG
Clonality:	Polyclonal
Immunogen:	The immunogen for anti-MAB21L1 antibody: synthetic peptide directed towards the N terminal of human MAB21L1. Synthetic peptide located within the following region: IAAQAKLVYHLNKYYNEKCQARKAAIAKTIREVCKVSDVLKEVEVQEPR
Formulation:	Liquid. Purified antibody supplied in 1x PBS buffer with 0.09% (w/v) sodium azide and 2% sucrose.
Purification:	Affinity Purified
Conjugation:	Unconjugated
Storage:	Store at -20°C as received.
Stability:	Stable for 12 months from date of receipt.
Predicted Protein Size:	41 kDa
Gene Name:	mab-21 like 1
Database Link:	NP_005575 Entrez Gene 4081 Human Q13394



[View online »](#)

Background:

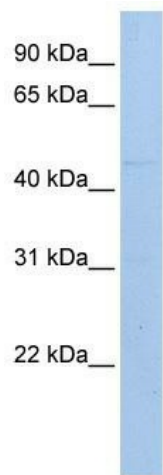
This gene is similar to the MAB-21 cell fate-determining gene found in *C. elegans*. It may be involved in eye and cerebellum development, and it has been proposed that expansion of a trinucleotide repeat region in the 5' UTR may play a role in a variety of psychiatric disorders. This gene is similar to the MAB-21 cell fate-determining gene found in *C. elegans*. It may be involved in eye and cerebellum development, and it has been proposed that expansion of a trinucleotide repeat region in the 5' UTR may play a role in a variety of psychiatric disorders. There is evidence that this gene has 2 transcripts with alternate polyA sites, but the full length nature of the longer transcript has not been defined. Sequence Note: The sequence U38810.1 is a chimeric mRNA clone. Only the mab-21-like protein 1 region was propagated into this RefSeq record.

Synonyms:

CAGR1; Nbla00126

Note:

Immunogen Sequence Homology: Dog: 100%; Pig: 100%; Rat: 100%; Horse: 100%; Human: 100%; Mouse: 100%; Bovine: 100%; Rabbit: 100%; Zebrafish: 100%; Guinea pig: 100%

Product images:


WB Suggested Anti-MAB21L1 Antibody Titration:
0.2-1 ug/ml; ELISA Titer: 1: 12500; Positive
Control: 721_B cell lysate