

## Product datasheet for **TA335095**

### INPP5B Rabbit Polyclonal Antibody

#### Product data:

Product Type:	Primary Antibodies
Applications:	WB
Recommended Dilution:	WB
Reactivity:	Human
Host:	Rabbit
Isotype:	IgG
Clonality:	Polyclonal
Immunogen:	The immunogen for anti-INPP5B antibody: synthetic peptide directed towards the middle region of human INPP5B. Synthetic peptide located within the following region: IHNGQVPCHFEFINKPDEESYCKQWLNANPSRGFLLPDS DVEIDLFLVN
Formulation:	Liquid. Purified antibody supplied in 1x PBS buffer with 0.09% (w/v) sodium azide and 2% sucrose. <i>Note that this product is shipped as lyophilized powder to China customers.</i>
Purification:	Affinity Purified
Conjugation:	Unconjugated
Storage:	Store at -20°C as received.
Stability:	Stable for 12 months from date of receipt.
Predicted Protein Size:	77 kDa
Gene Name:	inositol polyphosphate-5-phosphatase B
Database Link:	<a href="#">NP_005531</a> <a href="#">Entrez Gene 3633 Human</a> <a href="#">P32019</a>



[View online »](#)

**Background:**

Cellular calcium signaling is controlled by the production of inositol phosphates (IPs) by phospholipase C in response to extracellular signals. The IP signaling molecules are inactivated by a family of inositol polyphosphate-5-phosphatases (5-phosphatases). INPP5B is the type II 5-phosphatase. The protein is localized to the cytosol and mitochondria, and associates with membranes through an isoprenyl modification near the C-terminus. Cellular calcium signaling is controlled by the production of inositol phosphates (IPs) by phospholipase C in response to extracellular signals. The IP signaling molecules are inactivated by a family of inositol polyphosphate-5-phosphatases (5-phosphatases). This gene encodes the type II 5-phosphatase. The protein is localized to the cytosol and mitochondria, and associates with membranes through an isoprenyl modification near the C-terminus. Several alternatively spliced transcript variants of this gene have been described, but the full-length nature of some of these variants has not been determined.

**Synonyms:**

5PTase

**Note:**

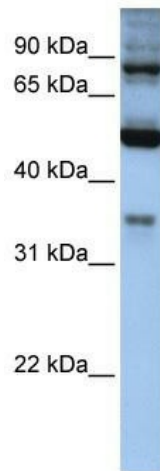
Immunogen Sequence Homology: Human: 100%; Pig: 92%; Rat: 92%; Horse: 92%; Mouse: 92%; Guinea pig: 92%; Dog: 85%; Rabbit: 77%

**Protein Families:**

Druggable Genome

**Protein Pathways:**

Inositol phosphate metabolism, Metabolic pathways, Phosphatidylinositol signaling system

**Product images:**

WB Suggested Anti-INPP5B Antibody Titration:  
0.2-1 ug/ml; ELISA Titer: 1: 1562500; Positive  
Control: Hela cell lysate