

Product datasheet for **TA335094**

HINT1 Rabbit Polyclonal Antibody

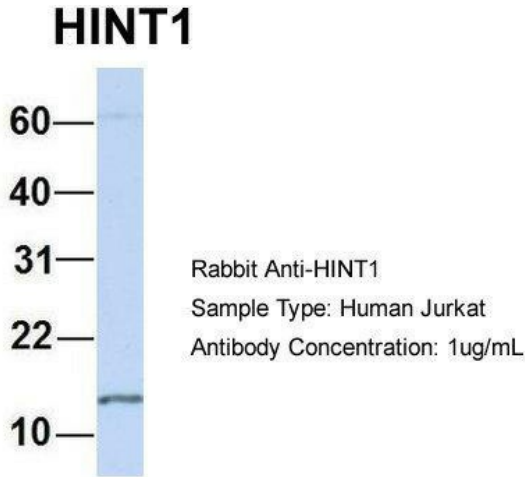
Product data:

Product Type:	Primary Antibodies
Applications:	IHC, WB
Recommended Dilution:	WB, IHC
Reactivity:	Human
Host:	Rabbit
Isotype:	IgG
Clonality:	Polyclonal
Immunogen:	The immunogen for anti-HINT1 antibody: synthetic peptide directed towards the N terminal of human HINT1. Synthetic peptide located within the following region: CLAFHDISPQAPTHFLVIPKKHISQISVAEDDDESLGHLMIVGKKCAAD
Formulation:	Liquid. Purified antibody supplied in 1x PBS buffer with 0.09% (w/v) sodium azide and 2% sucrose. <i>Note that this product is shipped as lyophilized powder to China customers.</i>
Purification:	Affinity Purified
Conjugation:	Unconjugated
Storage:	Store at -20°C as received.
Stability:	Stable for 12 months from date of receipt.
Predicted Protein Size:	14 kDa
Gene Name:	histidine triad nucleotide binding protein 1
Database Link:	NP_005331 Entrez Gene 3094 Human P49773
Background:	HINT1 hydrolyzes adenosine 5'-monophosphoramidate substrates such as AMP-morpholidate, AMP-N-alanine methyl ester, AMP-alpha-acetyl lysine methyl ester and AMP-NH ₂ .
Synonyms:	HINT; NMAN; PKCI-1; PRKCNH1
Note:	Immunogen Sequence Homology: Dog: 100%; Pig: 100%; Rat: 100%; Horse: 100%; Human: 100%; Mouse: 100%; Bovine: 100%; Rabbit: 100%; Guinea pig: 100%



[View online »](#)

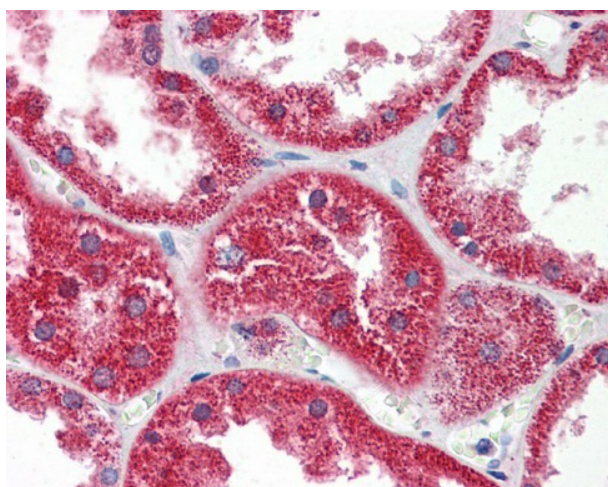
Product images:



Host: Rabbit; Target Name: HINT1; Sample Tissue: Human Jurkat; Antibody Dilution: 1.0 ug/ml; HINT1 is strongly supported by BioGPS gene expression data to be expressed in Jurkat



WB Suggested Anti-HINT1 Antibody Titration: 0.2-1 ug/ml; ELISA Titer: 1: 312500; Positive Control: 721_B cell lysate HINT1 is strongly supported by BioGPS gene expression data to be expressed in Human 721_B cells



Kidney