

## Product datasheet for **TA335093**

### HINT1 Rabbit Polyclonal Antibody

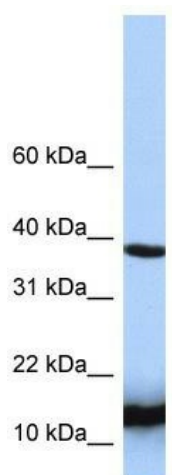
#### Product data:

Product Type:	Primary Antibodies
Applications:	IHC, WB
Recommended Dilution:	WB, IHC
Reactivity:	Human
Host:	Rabbit
Isotype:	IgG
Clonality:	Polyclonal
Immunogen:	The immunogen for anti-HINT1 antibody: synthetic peptide directed towards the N terminal of human HINT1. Synthetic peptide located within the following region: ADEIAKAQVARPGGDTIFGKIIRKEIPAKIIFEDDRCLAFHDISPQAPTH
Formulation:	Liquid. Purified antibody supplied in 1x PBS buffer with 0.09% (w/v) sodium azide and 2% sucrose. <i>Note that this product is shipped as lyophilized powder to China customers.</i>
Purification:	Affinity Purified
Conjugation:	Unconjugated
Storage:	Store at -20°C as received.
Stability:	Stable for 12 months from date of receipt.
Predicted Protein Size:	14 kDa
Gene Name:	histidine triad nucleotide binding protein 1
Database Link:	<a href="#">NP_005331</a> <a href="#">Entrez Gene 3094 Human P49773</a>
Background:	HINT1 hydrolyzes adenosine 5'-monophosphoramidate substrates such as AMP-morpholidate, AMP-N-alanine methyl ester, AMP-alpha-acetyl lysine methyl ester and AMP-NH <sub>2</sub> .
Synonyms:	HINT; NMAN; PKCI-1; PRKCNH1
Note:	Immunogen Sequence Homology: Dog: 100%; Pig: 100%; Rat: 100%; Horse: 100%; Human: 100%; Mouse: 100%; Bovine: 100%; Rabbit: 100%; Zebrafish: 100%

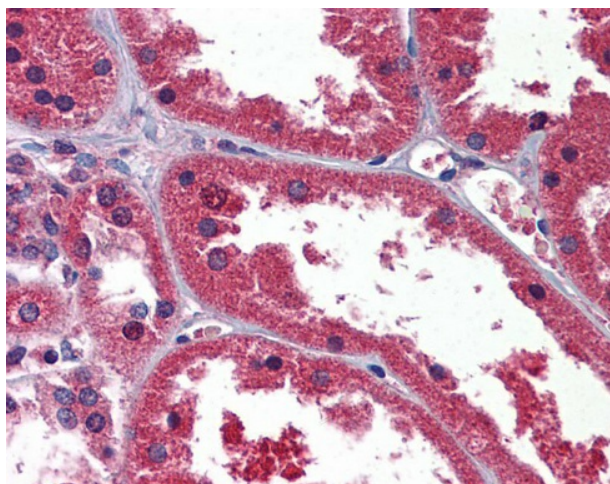


[View online »](#)

## Product images:



WB Suggested Anti-HINT1 Antibody Titration: 0.2-1 ug/ml; ELISA Titer: 1: 1562500; Positive Control: Jurkat cell lysate. HINT1 is strongly supported by BioGPS gene expression data to be expressed in Human Jurkat cells



Kidney