

Product datasheet for **TA335090**

GRF2 (RAPGEF1) Rabbit Polyclonal Antibody

Product data:

Product Type:	Primary Antibodies
Applications:	WB
Recommended Dilution:	WB
Reactivity:	Human
Host:	Rabbit
Isotype:	IgG
Clonality:	Polyclonal
Immunogen:	The immunogen for anti-RAPGEF1 antibody: synthetic peptide directed towards the C terminal of human RAPGEF1. Synthetic peptide located within the following region: LWAKEQNEEKSPNLTQFTEHFNNMSYWVRSIIMLQEKAQDRERLLLKFIK
Formulation:	Liquid. Purified antibody supplied in 1x PBS buffer with 0.09% (w/v) sodium azide and 2% sucrose. <i>Note that this product is shipped as lyophilized powder to China customers.</i>
Purification:	Affinity Purified
Conjugation:	Unconjugated
Storage:	Store at -20°C as received.
Stability:	Stable for 12 months from date of receipt.
Predicted Protein Size:	120 kDa
Gene Name:	Rap guanine nucleotide exchange factor 1
Database Link:	NP_005303 Entrez Gene 2889 Human Q13905



[View online »](#)

Background: RAPGEF1 is a human guanine nucleotide exchange factor. It transduces signals from CRK by binding the SH3 domain of CRK, and activating several members of the Ras family of GTPases. This signaling cascade protein may be involved in apoptosis, integrin-mediated signal transduction, and cell transformation. This gene encodes a human guanine nucleotide exchange factor. It transduces signals from CRK by binding the SH3 domain of CRK, and activating several members of the Ras family of GTPases. This signaling cascade that may be involved in apoptosis, integrin-mediated signal transduction, and cell transformation. Several alternatively spliced transcript variants of this gene have been described, but the full-length nature of some variants has not been determined.

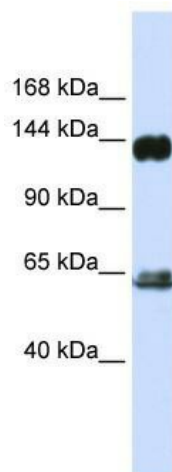
Synonyms: C3G; GRF2

Note: Immunogen Sequence Homology: Dog: 100%; Pig: 100%; Rat: 100%; Horse: 100%; Human: 100%; Mouse: 100%; Bovine: 100%; Zebrafish: 100%; Guinea pig: 100%

Protein Families: Druggable Genome

Protein Pathways: Focal adhesion, Insulin signaling pathway, Neurotrophin signaling pathway, Renal cell carcinoma

Product images:



WB Suggested Anti-RAPGEF1 Antibody Titration:
0.2-1 ug/ml; ELISA Titer: 1: 312500; Positive
Control: Human brain