

Product datasheet for **TA335089**

GRK5 Rabbit Polyclonal Antibody

Product data:

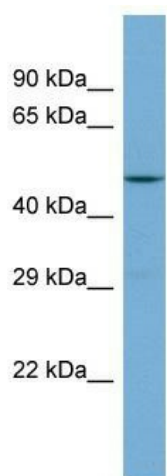
Product Type:	Primary Antibodies
Applications:	WB
Recommended Dilution:	WB
Reactivity:	Human
Host:	Rabbit
Isotype:	IgG
Clonality:	Polyclonal
Immunogen:	The immunogen for anti-GRK5 antibody is: synthetic peptide directed towards the C-terminal region of Human GRK5. Synthetic peptide located within the following region: WGLGCLYEMIEGQSPFRGRKEKVKREEVDRRVLETEEVYSHKFSEEAKS
Formulation:	Liquid. Purified antibody supplied in 1x PBS buffer with 0.09% (w/v) sodium azide and 2% sucrose. <i>Note that this product is shipped as lyophilized powder to China customers.</i>
Purification:	Affinity Purified
Conjugation:	Unconjugated
Storage:	Store at -20°C as received.
Stability:	Stable for 12 months from date of receipt.
Predicted Protein Size:	53 kDa
Gene Name:	G protein-coupled receptor kinase 5
Database Link:	NP_005299 Entrez Gene 2869 Human P34947
Background:	The function of this protein remains unknown.
Synonyms:	GPRK5
Note:	Immunogen Sequence Homology: Dog: 100%; Pig: 100%; Rat: 100%; Horse: 100%; Human: 100%; Mouse: 100%; Bovine: 100%; Guinea pig: 100%; Zebrafish: 79%
Protein Families:	Druggable Genome, Protein Kinase



[View online »](#)

Protein Pathways: Chemokine signaling pathway, Endocytosis

Product images:



Host: Rabbit; Target Name: GRK5; Sample Tissue: 721_B Whole cell lysates; Antibody Dilution: 1.0 ug/ml