

## Product datasheet for **TA335088**

### GRK5 Rabbit Polyclonal Antibody

#### Product data:

Product Type:	Primary Antibodies
Applications:	WB
Recommended Dilution:	WB
Reactivity:	Human, Rat
Host:	Rabbit
Isotype:	IgG
Clonality:	Polyclonal
Immunogen:	The immunogen for anti-GRK5 antibody: synthetic peptide directed towards the middle region of human GRK5. Synthetic peptide located within the following region: FYAAEILCGLEDLHRENTVYRDLKPENILLDDYGHIRISDLGLAVKIPEG
Formulation:	Liquid. Purified antibody supplied in 1x PBS buffer with 0.09% (w/v) sodium azide and 2% sucrose. <i>Note that this product is shipped as lyophilized powder to China customers.</i>
Purification:	Affinity Purified
Conjugation:	Unconjugated
Storage:	Store at -20°C as received.
Stability:	Stable for 12 months from date of receipt.
Predicted Protein Size:	68 kDa
Gene Name:	G protein-coupled receptor kinase 5
Database Link:	<a href="#">NP_005299</a> <a href="#">Entrez Gene 59075 Rat</a> <a href="#">Entrez Gene 2869 Human</a> <a href="#">P34947</a>



[View online »](#)

**Background:**

GRK5 is a member of the guanine nucleotide-binding protein (G protein)-coupled receptor kinase subfamily of the Ser/Thr protein kinase family. The protein phosphorylates the activated forms of G protein-coupled receptors thus initiating their deactivation. It has also been shown to play a role in regulating the motility of polymorphonuclear leukocytes (PMNs). This gene encodes a member of the guanine nucleotide-binding protein (G protein)-coupled receptor kinase subfamily of the Ser/Thr protein kinase family. The protein phosphorylates the activated forms of G protein-coupled receptors thus initiating their deactivation. It has also been shown to play a role in regulating the motility of polymorphonuclear leukocytes (PMNs). Publication Note: This RefSeq record includes a subset of the publications that are available for this gene. Please see the Entrez Gene record to access additional publications.

**Synonyms:**

GPRK5

**Note:**

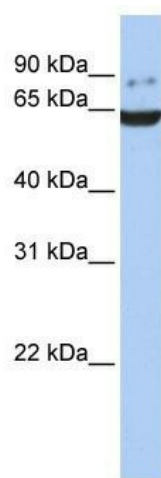
Immunogen Sequence Homology: Dog: 100%; Pig: 100%; Rat: 100%; Human: 100%; Mouse: 100%; Guinea pig: 100%; Horse: 93%; Bovine: 86%; Rabbit: 86%; Zebrafish: 86%; Yeast: 79%

**Protein Families:**

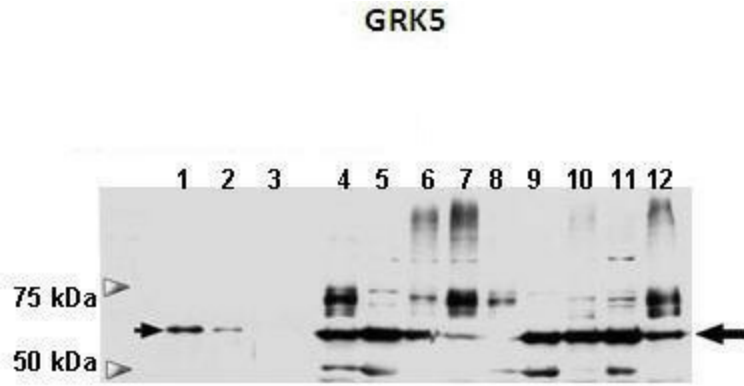
Druggable Genome, Protein Kinase

**Protein Pathways:**

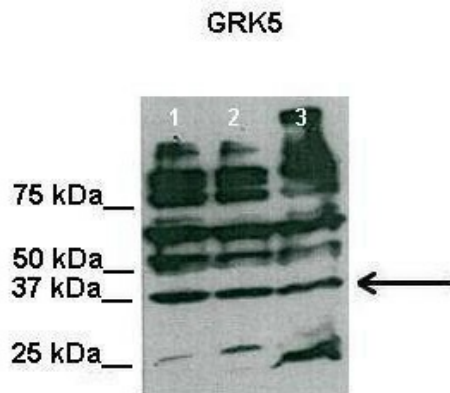
Chemokine signaling pathway, Endocytosis

**Product images:**

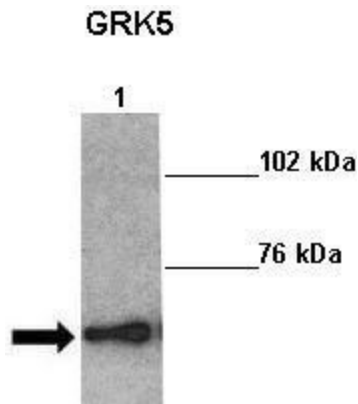
WB Suggested Anti-GRK5 Antibody Titration: 0.2-1 ug/ml; ELISA Titer: 1: 1562500; Positive Control: Human brain



Lanes: Lane 1: 1ug human GRK5 protein; Lane 2: 0.25ug human GRK5 protein; Lane 3: 0.1ug human GRK5 protein; Lane 4: 5ug rat striatum homogenate; Lane 5: 5ug rat striatum cytosol; Lane 6: 5ug rat striatum light membrane fraction; Lane 7: 5ug rat striatum synaptic



Lanes: Lanes 1-3: 40 ug tobacco hornworm larvae intestine lysate; Primary Antibody Dilution: 1: 1000; Secondary Antibody: Goat anti-rabbit HRP; Secondary Antibody Dilution: 1: 10000; Gene Name: GRK5; Submitted by: Dra. Helena Porta Ducoing and Biol. Gladly



Sample Type: Lane 1: 20ug mouse left ventricle heart lysate Primary Antibody Dilution: 1: 1000 Secondary Antibody: Anti-rabbit-HRP Secondary Antibody Dilution: 1: 5000 Color/Signal Descriptions: GRK5 Gene Name: Kathleen Gabrielson Submitted by: