

Product datasheet for **TA335087**

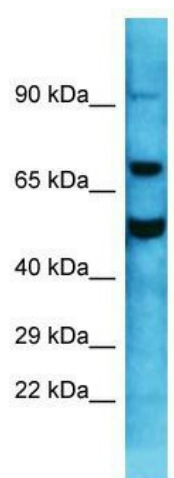
Gn1 Rabbit Polyclonal Antibody

Product data:

Product Type:	Primary Antibodies
Applications:	WB
Recommended Dilution:	WB
Reactivity:	Mouse
Host:	Rabbit
Isotype:	IgG
Clonality:	Polyclonal
Immunogen:	The immunogen for anti-Gn1 antibody is: synthetic peptide directed towards the C-terminal region of Mouse Gn1. Synthetic peptide located within the following region: EEEEEEELSSSCEEEGEEEDRDADEEGEGDEDTPTSDPGSCLTARNPYALL
Formulation:	Liquid. Purified antibody supplied in 1x PBS buffer with 0.09% (w/v) sodium azide and 2% sucrose. <i>Note that this product is shipped as lyophilized powder to China customers.</i>
Purification:	Affinity Purified
Conjugation:	Unconjugated
Storage:	Store at -20°C as received.
Stability:	Stable for 12 months from date of receipt.
Predicted Protein Size:	69 kDa
Gene Name:	guanine nucleotide binding protein-like 1
Database Link:	NP_032162 Entrez Gene 14670 Mouse P36916
Background:	Gn1 is a possible regulatory or functional link with the histocompatibility cluster.
Synonyms:	HSR1
Note:	Immunogen Sequence Homology: Dog: 100%; Pig: 100%; Rat: 100%; Horse: 100%; Human: 100%; Mouse: 100%; Bovine: 100%; Guinea pig: 100%; Rabbit: 93%; Yeast: 86%



[View online »](#)

Product images:

Host: Rabbit; Target Name: Gnl1; Sample Tissue: Mouse Testis lysates; Antibody Dilution: 1.0 ug/ml