

Product datasheet for **TA335086**

PPM1J Rabbit Polyclonal Antibody

Product data:

Product Type:	Primary Antibodies
Applications:	WB
Recommended Dilution:	WB
Reactivity:	Human
Host:	Rabbit
Isotype:	IgG
Clonality:	Polyclonal
Immunogen:	The immunogen for anti-PPM1J antibody: synthetic peptide directed towards the C terminal of human PPM1J. Synthetic peptide located within the following region: YTALAQALVLGARGTPRDRGWRLPNNKLGSGDDISVFVIPLGGPGSYS
Formulation:	Liquid. Purified antibody supplied in 1x PBS buffer with 0.09% (w/v) sodium azide and 2% sucrose. <i>Note that this product is shipped as lyophilized powder to China customers.</i>
Purification:	Affinity Purified
Conjugation:	Unconjugated
Storage:	Store at -20°C as received.
Stability:	Stable for 12 months from date of receipt.
Predicted Protein Size:	55 kDa
Gene Name:	protein phosphatase, Mg ²⁺ /Mn ²⁺ dependent 1J
Database Link:	NP_005158 Entrez Gene 333926 Human Q5JR12
Background:	PPM1J is the serine/threonine protein phosphatase. The mouse homolog of this protein apparently belongs to the protein phosphatase 2C family. The exact function of this protein is not yet known. This gene encodes the serine/threonine protein phosphatase. The mouse homolog of this gene apparently belongs to the protein phosphatase 2C family of genes. The exact function of this gene is not yet known.
Synonyms:	PP2CZ; PP2Czeta; PPP2CZ

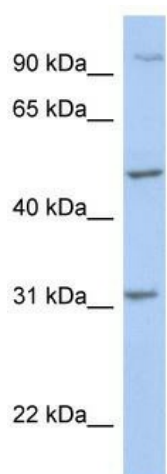


[View online »](#)

Note: Immunogen Sequence Homology: Dog: 100%; Pig: 100%; Rat: 100%; Horse: 100%; Human: 100%; Mouse: 100%; Bovine: 100%; Rabbit: 100%; Guinea pig: 100%; Zebrafish: 85%

Protein Families: Phosphatase

Product images:



WB Suggested Anti-PPM1J Antibody Titration: 0.2-1 ug/ml; ELISA Titer: 1: 312500; Positive Control: 721_B cell lysate