

Product datasheet for **TA335083**

ICA1 Rabbit Polyclonal Antibody

Product data:

Product Type:	Primary Antibodies
Applications:	WB
Recommended Dilution:	WB
Reactivity:	Human
Host:	Rabbit
Isotype:	IgG
Clonality:	Polyclonal
Immunogen:	The immunogen for anti-ICA1 antibody: synthetic peptide directed towards the N terminal of human ICA1. Synthetic peptide located within the following region: SKAIVLYQKRICFLSQEENELGKFLRSQGFQDKTRAGKMMQATGKALCFE
Formulation:	Liquid. Purified antibody supplied in 1x PBS buffer with 0.09% (w/v) sodium azide and 2% sucrose. <i>Note that this product is shipped as lyophilized powder to China customers.</i>
Purification:	Affinity Purified
Conjugation:	Unconjugated
Storage:	Store at -20°C as received.
Stability:	Stable for 12 months from date of receipt.
Predicted Protein Size:	55 kDa
Gene Name:	islet cell autoantigen 1
Database Link:	NP_004959 Entrez Gene 3382 Human Q05084



[View online »](#)

Background:

ICA1 is a protein with an arfaptin homology domain that is found both in the cytosol and as membrane-bound form on the Golgi complex and immature secretory granules. This protein is believed to be an autoantigen in insulin-dependent diabetes mellitus and primary Sjogren's syndrome. This gene encodes a protein with an arfaptin homology domain that is found both in the cytosol and as membrane-bound form on the Golgi complex and immature secretory granules. This protein is believed to be an autoantigen in insulin-dependent diabetes mellitus and primary Sjogren's syndrome. Alternatively spliced variants which encode different protein isoforms have been described; however, not all variants have been fully characterized.

Synonyms:

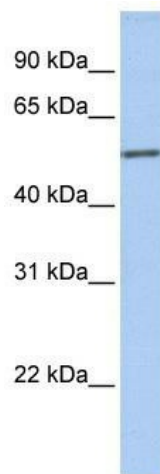
ICA69; ICAp69

Note:

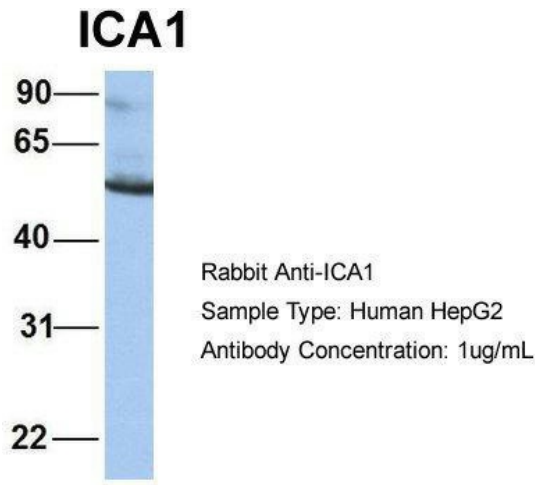
Immunogen Sequence Homology: Dog: 100%; Pig: 100%; Rat: 100%; Horse: 100%; Human: 100%; Mouse: 100%; Bovine: 100%; Rabbit: 100%; Guinea pig: 100%; Zebrafish: 86%

Protein Pathways:

Type I diabetes mellitus

Product images:

WB Suggested Anti-ICA1 Antibody Titration: 0.2-1 ug/ml; ELISA Titer: 1: 62500; Positive Control: HeLa cell lysate



Host: Rabbit; Target Name: ICA1; Sample Tissue: Human HepG2; Antibody Dilution: 1.0 ug/ml; There is BioGPS gene expression data showing that ICA1 is expressed in HepG2