

Product datasheet for **TA335080**

Kinesin 5C (KIF5C) Rabbit Polyclonal Antibody

Product data:

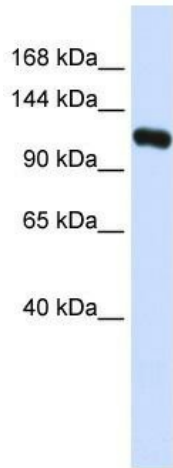
Product Type:	Primary Antibodies
Applications:	IP, WB
Recommended Dilution:	WB, IP
Reactivity:	Human, Mouse, Rat
Host:	Rabbit
Isotype:	IgG
Clonality:	Polyclonal
Immunogen:	The immunogen for anti-KIF5C antibody: synthetic peptide directed towards the N terminal of human KIF5C. Synthetic peptide located within the following region: ADPAECSIKVMCRFRPLNEAEILRGDKFIPKFKGDETVVIGQGKPYVFDR
Formulation:	Liquid. Purified antibody supplied in 1x PBS buffer with 0.09% (w/v) sodium azide and 2% sucrose.
Purification:	Affinity Purified
Conjugation:	Unconjugated
Storage:	Store at -20°C as received.
Stability:	Stable for 12 months from date of receipt.
Predicted Protein Size:	109 kDa
Gene Name:	kinesin family member 5C
Database Link:	NP_004513 Entrez Gene 16574 Mouse Entrez Gene 311024 Rat Entrez Gene 3800 Human O60282
Background:	KIF5C belongs to the kinesin-like protein family, Kinesin subfamily. It contains 1 kinesin-motor domain. Kinesin is a microtubule-associated force-producing protein that may play a role in organelle transport.
Synonyms:	CDCBM2; KINN; NKHC; NKHC-2; NKHC2
Note:	Immunogen Sequence Homology: Pig: 100%; Human: 100%; Rabbit: 100%; Guinea pig: 100%; Dog: 93%; Rat: 93%; Mouse: 93%; Bovine: 93%



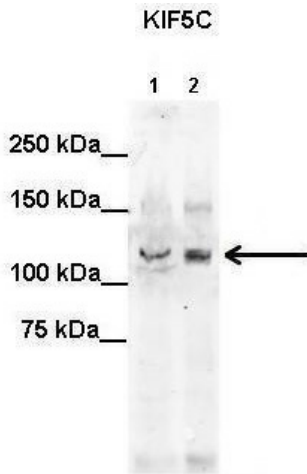
[View online »](#)

Protein Families: Druggable Genome

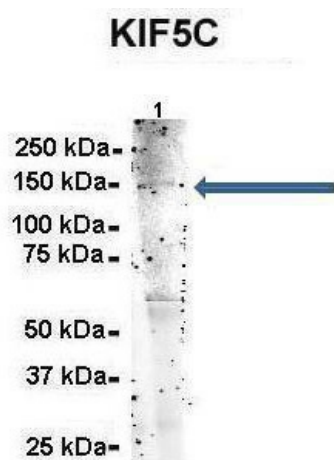
Product images:



WB Suggested Anti-KIF5C Antibody Titration: 0.2-1 ug/ml; ELISA Titer: 1: 312500; Positive Control: Human brain



Lanes: 1. Mouse WT brain extract (80ug) 2. Rat brain extract (80ug); Primary Antibody Dilution: 2 ug/ml; Secondary Antibody: IRDye 800CW goat anti-rabbit from Li-COR Bioscience; Secondary Antibody Dilution: 1: 20, 000; Gene Name: KIF5C; Submitted by: Dr.



Amount and Sample Type: 500 ug mouse brain homogenate; Amount of IP Antibody: 6 ug; Primary Antibody: KIF5C; Primary Antibody Dilution: 1: 500; Secondary Antibody: Goat anti-rabbit Alexa-Fluor 594; Secondary Antibody Dilution: 1: 5000; Gene Name: KIF5C; S