

## Product datasheet for **TA335078**

### Frg1 Rabbit Polyclonal Antibody

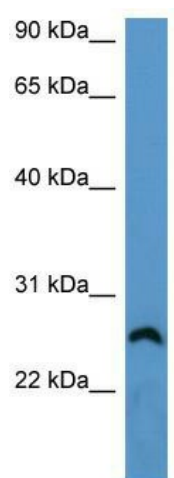
#### Product data:

Product Type:	Primary Antibodies
Applications:	WB
Recommended Dilution:	WB
Reactivity:	Mouse
Host:	Rabbit
Isotype:	IgG
Clonality:	Polyclonal
Immunogen:	The immunogen for anti-Frg1 antibody: synthetic peptide corresponding to a region of Mouse. Synthetic peptide located within the following region: GINS DGLVGRSDAIGPREQWEPVFQDGKMALLASNSCFIRCNEAGDIEA
Formulation:	Liquid. Purified antibody supplied in 1x PBS buffer with 0.09% (w/v) sodium azide and 2% sucrose. <i>Note that this product is shipped as lyophilized powder to China customers.</i>
Purification:	Affinity Purified
Conjugation:	Unconjugated
Storage:	Store at -20°C as received.
Stability:	Stable for 12 months from date of receipt.
Predicted Protein Size:	28 kDa
Gene Name:	FSHD region gene 1
Database Link:	<a href="#">NP_038550</a> <a href="#">Entrez Gene 14300 Mouse P97376</a>
Background:	Frg1 may have a role in processing of pre-rRNA or in the assembly of rRNA into ribosomal subunits and also may be involved in pre-mRNA splicing
Synonyms:	FRG1A; FSG1
Note:	Immunogen Sequence Homology: Dog: 100%; Pig: 100%; Rat: 100%; Goat: 100%; Horse: 100%; Human: 100%; Mouse: 100%; Bovine: 100%; Rabbit: 100%; Guinea pig: 100%; Zebrafish: 86%



[View online »](#)

## Product images:



WB Suggested Anti-Frg1 Antibody Titration: 0.2-1 ug/ml; ELISA Titer: 1: 62500; Positive Control: Mouse Brain