

Product datasheet for **TA335075**

EPS8 Rabbit Polyclonal Antibody

Product data:

Product Type:	Primary Antibodies
Applications:	WB
Recommended Dilution:	WB
Reactivity:	Human
Host:	Rabbit
Isotype:	IgG
Clonality:	Polyclonal
Immunogen:	The immunogen for anti-EPS8 antibody: synthetic peptide directed towards the middle region of human EPS8. Synthetic peptide located within the following region: VSKVPANITRQNSSSSDSGGIVRDSQRHKQLPVDRRKSQMEEVQDELIH
Formulation:	Liquid. Purified antibody supplied in 1x PBS buffer with 0.09% (w/v) sodium azide and 2% sucrose. <i>Note that this product is shipped as lyophilized powder to China customers.</i>
Purification:	Affinity Purified
Conjugation:	Unconjugated
Storage:	Store at -20°C as received.
Stability:	Stable for 12 months from date of receipt.
Predicted Protein Size:	92 kDa
Gene Name:	epidermal growth factor receptor pathway substrate 8
Database Link:	NP_004438 Entrez Gene 2059 Human Q12929
Background:	This gene encodes a member of the EPS8 family. This protein contains one PH domain and one SH3 domain. It functions as part of the EGFR pathway, though its exact role has not been determined. Highly similar proteins in other organisms are involved in the transduction of signals from Ras to Rac and growth factor-mediated actin remodeling. Alternate transcriptional splice variants of this gene have been observed but have not been thoroughly characterized. [provided by RefSeq, Jul 2008]



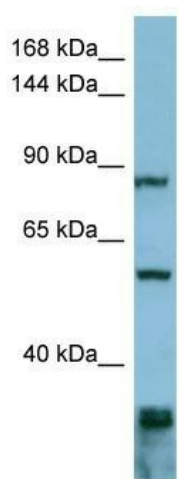
[View online »](#)

Synonyms: DFNB102

Note: Immunogen Sequence Homology: Pig: 100%; Human: 100%; Mouse: 100%; Bovine: 100%; Dog: 93%; Rat: 93%; Horse: 93%; Rabbit: 93%

Protein Families: Druggable Genome

Product images:



WB Suggested Anti-EPS8 Antibody Titration: 0.2-1 ug/ml; ELISA Titer: 1: 62500; Positive Control: ACHN cell lysate EPS8 is supported by BioGPS gene expression data to be expressed in ACHN