

Product datasheet for **TA335074**

ARHGAP1 Rabbit Polyclonal Antibody

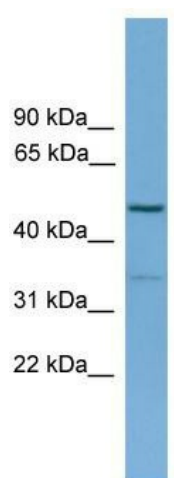
Product data:

Product Type:	Primary Antibodies
Applications:	WB
Recommended Dilution:	WB
Reactivity:	Human
Host:	Rabbit
Isotype:	IgG
Clonality:	Polyclonal
Immunogen:	The immunogen for anti-ARHGAP1 antibody: synthetic peptide directed towards the N terminal of human ARHGAP1. Synthetic peptide located within the following region: MDPLSELQDDLTLDDTSEALNQLKLASIDEKNWPSDEMPDFPKSDDSKSS
Formulation:	Liquid. Purified antibody supplied in 1x PBS buffer with 0.09% (w/v) sodium azide and 2% sucrose. <i>Note that this product is shipped as lyophilized powder to China customers.</i>
Purification:	Affinity Purified
Conjugation:	Unconjugated
Storage:	Store at -20°C as received.
Stability:	Stable for 12 months from date of receipt.
Predicted Protein Size:	50 kDa
Gene Name:	Rho GTPase activating protein 1
Database Link:	NP_004299 Entrez Gene 392 Human Q07960
Background:	ARHGAP1 is a GTPase activator for the Rho, Rac and Cdc42 proteins, converting them to the putatively inactive GDP-bound state. Cdc42 seems to be the preferred substrate.
Synonyms:	CDC42GAP; p50rhoGAP; RHOGAP; RHOGAP1
Note:	Immunogen Sequence Homology: Pig: 100%; Rat: 100%; Human: 100%; Mouse: 100%; Bovine: 100%; Guinea pig: 100%; Dog: 93%; Horse: 93%; Rabbit: 86%



[View online »](#)

Product images:



WB Suggested Anti-ARHGAP1 Antibody Titration:
0.2-1 ug/ml; Positive Control: Human Liver