

## Product datasheet for **TA335073**

### IDH3B Rabbit Polyclonal Antibody

#### Product data:

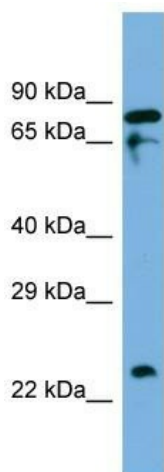
Product Type:	Primary Antibodies
Applications:	WB
Recommended Dilution:	WB
Reactivity:	Human
Host:	Rabbit
Isotype:	IgG
Clonality:	Polyclonal
Immunogen:	The immunogen for anti-IDH3B antibody is: synthetic peptide directed towards the C-terminal region of Human IDH3B. Synthetic peptide located within the following region: YMTRHNNLDLVIIREQTEGEYSSLEHEVRPQKLGEKDEEDGREVELLVSL
Formulation:	Liquid. Purified antibody supplied in 1x PBS buffer with 0.09% (w/v) sodium azide and 2% sucrose. <i>Note that this product is shipped as lyophilized powder to China customers.</i>
Purification:	Affinity Purified
Conjugation:	Unconjugated
Storage:	Store at -20°C as received.
Stability:	Stable for 12 months from date of receipt.
Predicted Protein Size:	22 kDa
Gene Name:	isocitrate dehydrogenase 3 (NAD(+)) beta
Database Link:	<a href="#">NP_001245313</a> <a href="#">Entrez Gene 3420 Human</a> <a href="#">O43837</a>
Background:	The function of this protein remains unknown.
Synonyms:	RP46
Note:	Immunogen Sequence Homology: Dog: 100%; Pig: 100%; Rat: 100%; Horse: 100%; Human: 100%; Mouse: 100%; Bovine: 100%; Rabbit: 100%; Zebrafish: 100%; Guinea pig: 100%; Goat: 93%; Yeast: 93%



[View online »](#)

Protein Pathways: Citrate cycle (TCA cycle), Metabolic pathways

### Product images:



Host: Rabbit

Target Name: IDH3B

Sample Tissue: THP-1 Cell Lysate

Antibody Dilution: 1.0 $\mu$ g/ml

Host: Rabbit; Target Name: IDH3B; Sample Tissue: THP-1 Whole Cell lysates; Antibody Dilution: 1.0  $\mu$ g/ml