

Product datasheet for **TA335069**

FGF14 Rabbit Polyclonal Antibody

Product data:

Product Type:	Primary Antibodies
Applications:	WB
Recommended Dilution:	WB
Reactivity:	Human
Host:	Rabbit
Isotype:	IgG
Clonality:	Polyclonal
Immunogen:	The immunogen for anti-FGF14 antibody: synthetic peptide directed towards the middle region of human FGF14. Synthetic peptide located within the following region: ENYYVIYSSMLYRQQESGRAWFLGLNKEGQAMKGNRVKKTTPAAHFLPKP
Formulation:	Liquid. Purified antibody supplied in 1x PBS buffer with 0.09% (w/v) sodium azide and 2% sucrose. <i>Note that this product is shipped as lyophilized powder to China customers.</i>
Purification:	Affinity Purified
Conjugation:	Unconjugated
Storage:	Store at -20°C as received.
Stability:	Stable for 12 months from date of receipt.
Predicted Protein Size:	28 kDa
Gene Name:	fibroblast growth factor 14
Database Link:	NP_004106 Entrez Gene 2259 Human Q92915
Background:	The protein encoded by this gene is a member of the fibroblast growth factor (FGF) family. FGF family members possess broad mitogenic and cell survival activities, and are involved in a variety of biological processes, including embryonic development, cell growth, morphogenesis, tissue repair, tumor growth and invasion. A mutation in this gene is associated with autosomal dominant cerebral ataxia. Alternatively spliced transcript variants have been found for this gene.



[View online »](#)

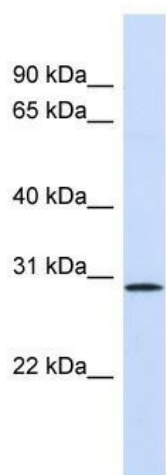
Synonyms: FGF-14; FHF-4; FHF4; SCA27

Note: Immunogen Sequence Homology: Dog: 100%; Pig: 100%; Rat: 100%; Horse: 100%; Human: 100%; Mouse: 100%; Sheep: 100%; Bovine: 100%; Rabbit: 100%; Guinea pig: 100%; Zebrafish: 93%

Protein Families: Secreted Protein

Protein Pathways: MAPK signaling pathway, Melanoma, Pathways in cancer, Regulation of actin cytoskeleton

Product images:



WB Suggested Anti-FGF14 Antibody Titration: 0.2-1 ug/ml; ELISA Titer: 1: 312500; Positive Control: Human Lung