

## Product datasheet for **TA335066**

### Ferredoxin Reductase (FDXR) Rabbit Polyclonal Antibody

#### Product data:

Product Type:	Primary Antibodies
Applications:	WB
Recommended Dilution:	WB
Reactivity:	Human
Host:	Rabbit
Isotype:	IgG
Clonality:	Polyclonal
Immunogen:	The immunogen for anti-FDXR antibody: synthetic peptide directed towards the middle region of human FDXR. Synthetic peptide located within the following region: LDPVDFLGLQDKIKEVPRPRKRLTELLLRATEKPGPAEAARQASASRAW
Formulation:	Liquid. Purified antibody supplied in 1x PBS buffer with 0.09% (w/v) sodium azide and 2% sucrose. <i>Note that this product is shipped as lyophilized powder to China customers.</i>
Purification:	Affinity Purified
Conjugation:	Unconjugated
Storage:	Store at -20°C as received.
Stability:	Stable for 12 months from date of receipt.
Predicted Protein Size:	54 kDa
Gene Name:	ferredoxin reductase
Database Link:	<a href="#">NP_077728</a> <a href="#">Entrez Gene 2232 Human</a> <a href="#">P22570</a>
Background:	FDXR is a mitochondrial flavoprotein that initiates electron transport for cytochromes P450 receiving electrons from NADPH. This gene encodes a mitochondrial flavoprotein that initiates electron transport for cytochromes P450 receiving electrons from NADPH. Multiple alternatively spliced transcript variants of this gene have been described although the full-length nature of only two that encode different isoforms have been determined.
Synonyms:	ADXR

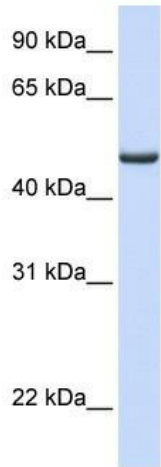


[View online »](#)

**Note:** Immunogen Sequence Homology: Human: 100%; Pig: 86%; Rat: 86%; Horse: 86%; Mouse: 86%; Bovine: 86%; Dog: 79%

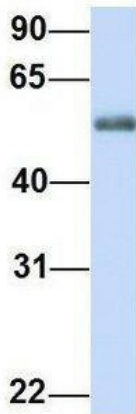
**Protein Families:** Druggable Genome

**Product images:**



WB Suggested Anti-FDXR Antibody Titration: 0.2-1 ug/ml; ELISA Titer: 1: 12500; Positive Control: Human Liver

**FDXR**



Rabbit Anti-FDXR  
 Sample Type: Human Adult Placenta  
 Antibody Concentration: 1ug/mL

Host: Rabbit; Target Name: FDXR; Sample Tissue: Human Adult Placenta; Antibody Dilution: 1.0 ug/ml