

Product datasheet for **TA335064**

Amy1a Rabbit Polyclonal Antibody

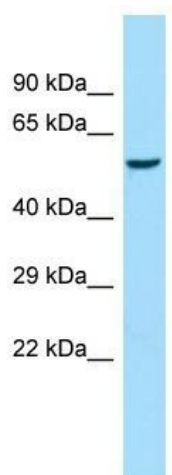
Product data:

Product Type:	Primary Antibodies
Applications:	WB
Recommended Dilution:	WB
Reactivity:	Rat, Mouse
Host:	Rabbit
Isotype:	IgG
Clonality:	Polyclonal
Immunogen:	The immunogen for anti-Amy1a antibody is: synthetic peptide directed towards the middle region of Rat Amy1a. Synthetic peptide located within the following region: YLKNWGEWGFMPSDRALVFVDNHDNQRGHGAGGSSILTFWDARLYKMAV
Formulation:	Liquid. Purified antibody supplied in 1x PBS buffer with 0.09% (w/v) sodium azide and 2% sucrose. <i>Note that this product is shipped as lyophilized powder to China customers.</i>
Purification:	Affinity Purified
Conjugation:	Unconjugated
Storage:	Store at -20°C as received.
Stability:	Stable for 12 months from date of receipt.
Predicted Protein Size:	57 kDa
Gene Name:	amylase, alpha 1A (salivary)
Database Link:	NP_001010970 Entrez Gene 24203 Rat
Background:	The function of this protein remains unknown.
Synonyms:	alpha-amylase; AMY1; AMY1B; glycogenase
Note:	Immunogen Sequence Homology: Dog: 100%; Pig: 100%; Rat: 100%; Human: 100%; Mouse: 100%; Rabbit: 100%



[View online »](#)

Product images:



Host: Rabbit; Target Name: Amy1a; Sample
Tissue: Rat Heart lysates; Antibody Dilution: 1.0
ug/ml