

Product datasheet for **TA335063**

LYN Rabbit Polyclonal Antibody

Product data:

Product Type:	Primary Antibodies
Applications:	WB
Recommended Dilution:	WB
Reactivity:	Human, Mouse
Host:	Rabbit
Isotype:	IgG
Clonality:	Polyclonal
Immunogen:	The immunogen for anti-LYN antibody: synthetic peptide directed towards the N terminal of human LYN. Synthetic peptide located within the following region: DPTSNKQQRVPESQLLPGQRFQTKDPEEQGDIVVALYPYDGIHPDDLFS
Formulation:	Liquid. Purified antibody supplied in 1x PBS buffer with 0.09% (w/v) sodium azide and 2% sucrose. <i>Note that this product is shipped as lyophilized powder to China customers.</i>
Purification:	Affinity Purified
Conjugation:	Unconjugated
Storage:	Store at -20°C as received.
Stability:	Stable for 12 months from date of receipt.
Predicted Protein Size:	58 kDa
Gene Name:	LYN proto-oncogene, Src family tyrosine kinase
Database Link:	NP_002341 Entrez Gene 17096 Mouse Entrez Gene 4067 Human P07948



[View online »](#)

Background: LYN down regulates expression of stem cell growth factor receptor (KIT).LYN acts as an effector of EpoR (erythropoietin receptor) in controlling KIT expression and may play a central role in erythroid differentiation during the switch between proliferation and maturation.LYN acts as a positive regulator of cell movement while negatively regulating adhesion to stromal cells by inhibiting the ICAM-1-binding activity of beta-2 integrins. LYN acts as the mediator that relays suppressing signals from the chemokine receptor CXCR4 to beta-2 integrin LFA-1 in hematopoietic precursors. Involved in induction of stress-activated protein kinase (SAPK), but not ERK or p38 MAPK, in response to genotoxic agents.LYN induces SAPK by a MKK7- and MEKK1-dependent mechanism. The LYN -> MEKK1 -> MKK7 -> SAPK pathway is functional in the induction of apoptosis by genotoxic agents.

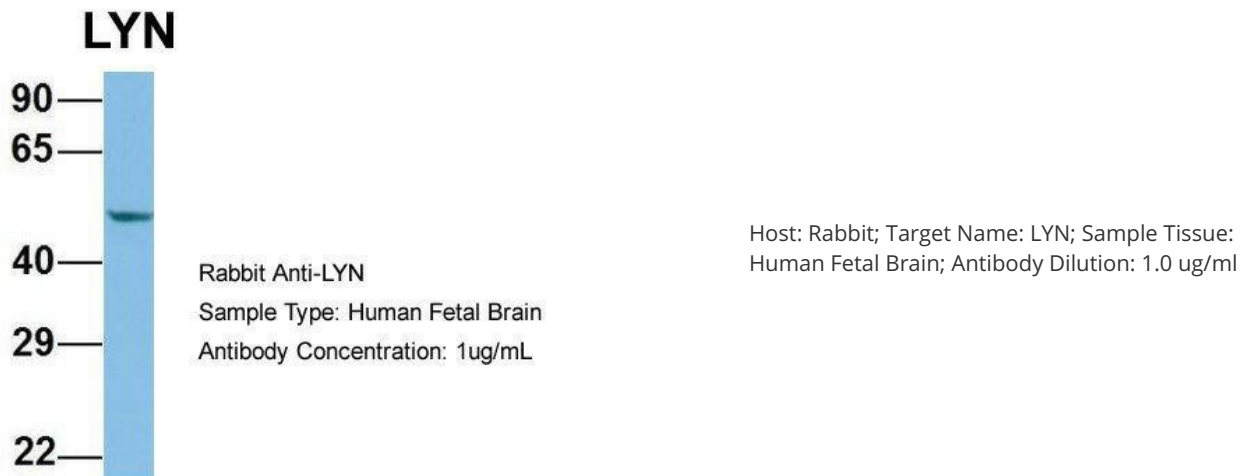
Synonyms: JTK8; p53Lyn; p56Lyn

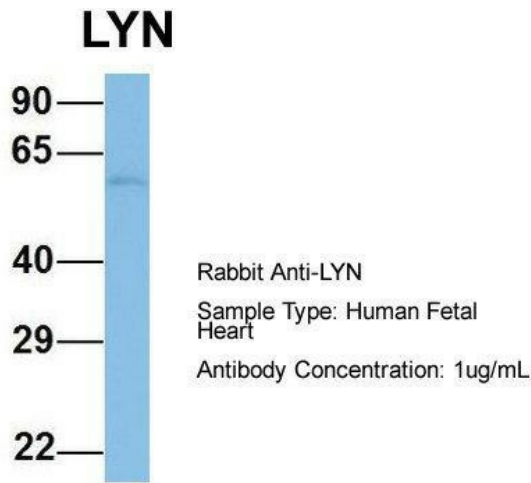
Note: Immunogen Sequence Homology: Dog: 100%; Pig: 100%; Horse: 100%; Human: 100%; Mouse: 100%; Sheep: 100%; Bovine: 100%; Rabbit: 100%; Rat: 93%; Guinea pig: 93%

Protein Families: Druggable Genome, Protein Kinase

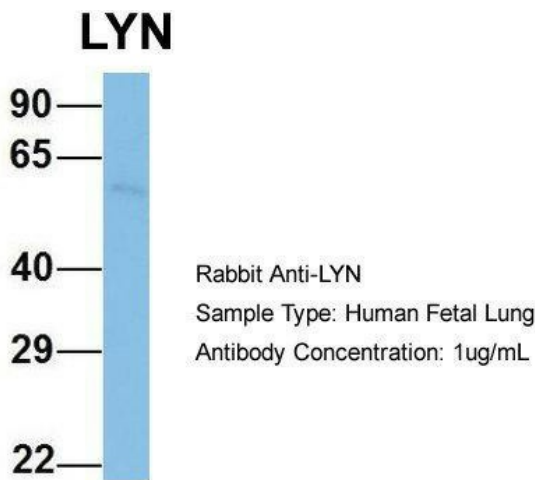
Protein Pathways: B cell receptor signaling pathway, Chemokine signaling pathway, Epithelial cell signaling in Helicobacter pylori infection, Fc epsilon RI signaling pathway, Fc gamma R-mediated phagocytosis, Long-term depression

Product images:

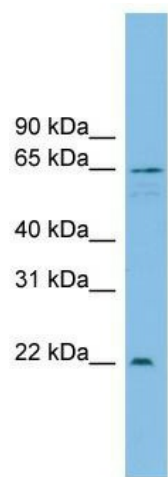




Host: Rabbit; Target Name: LYN; Sample Tissue: Human Fetal Heart; Antibody Dilution: 1.0 ug/ml



Host: Rabbit; Target Name: LYN; Sample Tissue: Human Fetal Lung; Antibody Dilution: 1.0 ug/ml



WB Suggested Anti-LYN Antibody Titration: 0.2-1 ug/ml; ELISA Titer: 1: 312500; Positive Control: Hela cell lysate LYN is strongly supported by BioGPS gene expression data to be expressed in Human HeLa cells