

Product datasheet for **TA335060**

LIF Rabbit Polyclonal Antibody

Product data:

Product Type:	Primary Antibodies
Applications:	WB
Recommended Dilution:	WB
Reactivity:	Human
Host:	Rabbit
Isotype:	IgG
Clonality:	Polyclonal
Immunogen:	The immunogen for anti-LIF antibody: synthetic peptide directed towards the N terminal of human LIF. Synthetic peptide located within the following region: KVLAAGVPLLLLVLHWKHGAGSPLPITPVNATCAIRHPCHNNLMNQIRSQ
Formulation:	Liquid. Purified antibody supplied in 1x PBS buffer with 0.09% (w/v) sodium azide and 2% sucrose. <i>Note that this product is shipped as lyophilized powder to China customers.</i>
Purification:	Affinity Purified
Conjugation:	Unconjugated
Storage:	Store at -20°C as received.
Stability:	Stable for 12 months from date of receipt.
Predicted Protein Size:	22 kDa
Gene Name:	leukemia inhibitory factor
Database Link:	NP_002300 Entrez Gene 3976 Human P15018



[View online »](#)

Background:

LIF is a pleiotropic cytokine with roles in several different systems. It is involved in the induction of hematopoietic differentiation in normal and myeloid leukemia cells, induction of neuronal cell differentiation, regulator of mesenchymal to epithelial conversion during kidney development, and may also have a role in immune tolerance at the maternal-fetal interface. Leukaemia inhibitory factor is a cytokine that induces macrophage differentiation. Neurotransmitters and neuropeptides, well known for their role in the communication between neurons, are also capable of activating monocytes and macrophages and inducing chemotaxis in immune cells. LIF signals through different receptors and transcription factors. LIF in conjunction with BMP2 acts in synergy on primary fetal neural progenitor cells to induce astrocytes. Publication Note: This RefSeq record includes a subset of the publications that are available for this gene. Please see the Entrez Gene record to access additional publications.

Synonyms:

CDF; DIA; HILDA; MLPLI

Note:

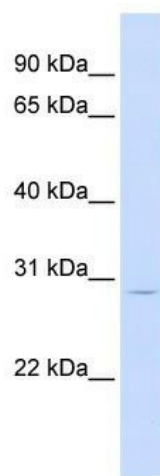
Immunogen Sequence Homology: Dog: 100%; Pig: 100%; Rat: 100%; Horse: 100%; Human: 100%; Mouse: 100%; Bovine: 100%; Guinea pig: 100%; Sheep: 86%; Rabbit: 86%

Protein Families:

Adult stem cells, Druggable Genome, ES Cell Differentiation/IPS, Secreted Protein

Protein Pathways:

Cytokine-cytokine receptor interaction, Jak-STAT signaling pathway

Product images:

WB Suggested Anti-LIF Antibody Titration: 0.2-1 ug/ml; ELISA Titer: 1: 62500; Positive Control: Human Muscle