

Product datasheet for **TA335055**

Rpsa Rabbit Polyclonal Antibody

Product data:

Product Type:	Primary Antibodies
Applications:	WB
Recommended Dilution:	WB
Reactivity:	Mouse
Host:	Rabbit
Isotype:	IgG
Clonality:	Polyclonal
Immunogen:	The immunogen for anti-Rpsa antibody: synthetic peptide corresponding to a region of Mouse. Synthetic peptide located within the following region: QMKEEDVLKFLAAGTHLGGTNLDFQMEQYIYKRKSDGIYIINLKRTWEKL
Formulation:	Liquid. Purified antibody supplied in 1x PBS buffer with 0.09% (w/v) sodium azide and 2% sucrose. <i>Note that this product is shipped as lyophilized powder to China customers.</i>
Purification:	Affinity Purified
Conjugation:	Unconjugated
Storage:	Store at -20°C as received.
Stability:	Stable for 12 months from date of receipt.
Predicted Protein Size:	32 kDa
Gene Name:	ribosomal protein SA
Database Link:	NP_035159 Entrez Gene 16785 Mouse P14206



[View online »](#)

Background:

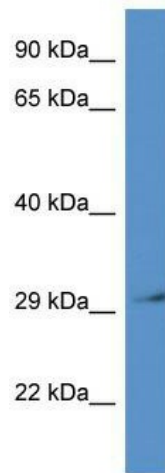
Rpsa is required for the assembly and/or stability of the 40S ribosomal subunit. It is also required for the processing of the 20S rRNA-precursor to mature 18S rRNA in a late step of the maturation of 40S ribosomal subunits. It also functions as a cell surface receptor for laminin. It plays a role in cell adhesion to the basement membrane and in the consequent activation of signaling transduction pathways. It may play a role in cell fate determination and tissue morphogenesis. It also acts as a receptor for several other ligands, including the pathogenic prion protein, viruses, and bacteria. It enables malignant tumor cells to penetrate laminin tissue and vessel barriers and activates precursor thymic anti-OFA/iLRP specific cytotoxic T cell. It may induce CD8 T-suppressor cells secreting IL-10.

Synonyms:

37LRP; 67LR; LAMBR; LamR; LAMR1; LBP; LBP/p40; LRP; LRP/LR; NEM/1CHD4; p40

Note:

Immunogen Sequence Homology: Dog: 100%; Pig: 100%; Rat: 100%; Goat: 100%; Horse: 100%; Human: 100%; Mouse: 100%; Sheep: 100%; Bovine: 100%; Rabbit: 100%; Zebrafish: 86%

Product images:

WB Suggested Anti-Rpsa Antibody; Titration: 1.0 ug/ml; Positive Control: Mouse Heart