

Product datasheet for **TA335047**

IFNA5 Rabbit Polyclonal Antibody

Product data:

Product Type:	Primary Antibodies
Applications:	WB
Recommended Dilution:	WB
Reactivity:	Human
Host:	Rabbit
Isotype:	IgG
Clonality:	Polyclonal
Immunogen:	The immunogen for anti-IFNA5 antibody: synthetic peptide directed towards the middle region of human IFNA5. Synthetic peptide located within the following region: TELYQQLNLDLEACMMQEVGVEDTPLMNVDSILTVRKYFQRITLYLTEKKY
Formulation:	Liquid. Purified antibody supplied in 1x PBS buffer with 0.09% (w/v) sodium azide and 2% sucrose. <i>Note that this product is shipped as lyophilized powder to China customers.</i>
Purification:	Affinity Purified
Conjugation:	Unconjugated
Storage:	Store at -20°C as received.
Stability:	Stable for 12 months from date of receipt.
Predicted Protein Size:	20 kDa
Gene Name:	interferon alpha 5
Database Link:	NP_002160 Entrez Gene 3442 Human P01569
Background:	Alpha interferon suppresses the cyclin D3 and cdc25A genes, leading to a reversible G0-like arrest.
Synonyms:	IFN-alpha-5; IFN-alphaG; INA5; INFAS; IeIF G
Note:	Immunogen Sequence Homology: Human: 100%; Pig: 85%; Guinea pig: 85%; Rat: 77%; Horse: 77%; Mouse: 77%

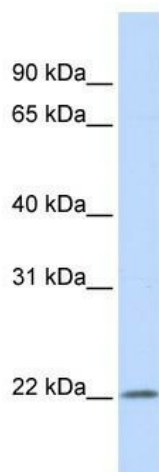


[View online »](#)

Protein Families: Druggable Genome, Secreted Protein

Protein Pathways: Antigen processing and presentation, Autoimmune thyroid disease, Cytokine-cytokine receptor interaction, Cytosolic DNA-sensing pathway, Jak-STAT signaling pathway, Natural killer cell mediated cytotoxicity, Regulation of autophagy, RIG-I-like receptor signaling pathway, Toll-like receptor signaling pathway

Product images:



WB Suggested Anti-IFNA5 Antibody Titration: 0.2-1 ug/ml; ELISA Titer: 1: 12500; Positive Control: MCF7 cell lysate