

## Product datasheet for **TA335046**

### Cpn10 (HSPE1) Rabbit Polyclonal Antibody

#### Product data:

Product Type:	Primary Antibodies
Applications:	WB
Recommended Dilution:	WB
Reactivity:	Human
Host:	Rabbit
Isotype:	IgG
Clonality:	Polyclonal
Immunogen:	The immunogen for anti-HSPE1 antibody: synthetic peptide directed towards the middle region of human HSPE1. Synthetic peptide located within the following region: GKGGEIQPVSVKVGDKVLLEPYGGTKVLLDDDKDYFLFRDGDILGKYVD
Formulation:	Liquid. Purified antibody supplied in 1x PBS buffer with 0.09% (w/v) sodium azide and 2% sucrose. <i>Note that this product is shipped as lyophilized powder to China customers.</i>
Purification:	Affinity Purified
Conjugation:	Unconjugated
Storage:	Store at -20°C as received.
Stability:	Stable for 12 months from date of receipt.
Predicted Protein Size:	11 kDa
Gene Name:	heat shock protein family E (Hsp10) member 1
Database Link:	<a href="#">NP_002148</a> <a href="#">Entrez Gene 3336 Human P61604</a>
Background:	HSPE1 is a major heat shock protein which functions as a chaperonin. Its structure consists of a heptameric ring which binds to another heat shock protein in order to form a symmetric, functional heterodimer which enhances protein folding in an ATP-dependent manner.
Synonyms:	CPN10; EPF; GROES; HSP10

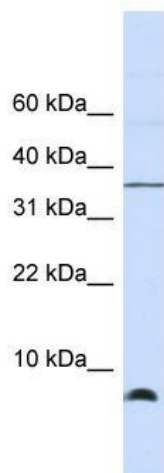


[View online »](#)

**Note:** Immunogen Sequence Homology: Dog: 100%; Pig: 100%; Rat: 100%; Goat: 100%; Horse: 100%; Human: 100%; Mouse: 100%; Sheep: 100%; Bovine: 100%; Rabbit: 100%; Guinea pig: 100%; Zebrafish: 86%

**Protein Families:** Druggable Genome, Stem cell - Pluripotency

**Product images:**



WB Suggested Anti-HSPE1 Antibody Titration: 0.2-1 ug/ml; ELISA Titer: 1: 62500; Positive Control: Human brain