

Product datasheet for **TA335044**

Granulin (GRN) Rabbit Polyclonal Antibody

Product data:

Product Type:	Primary Antibodies
Applications:	WB
Recommended Dilution:	WB
Reactivity:	Human
Host:	Rabbit
Isotype:	IgG
Clonality:	Polyclonal
Immunogen:	The immunogen for anti-GRN antibody is: synthetic peptide directed towards the middle region of Human GRN. Synthetic peptide located within the following region: CPMPNATCCSDHLHCCPQDTVCDLIQSKCLSKENATDLLTKLPAHTVGD
Formulation:	Liquid. Purified antibody supplied in 1x PBS buffer with 0.09% (w/v) sodium azide and 2% sucrose. <i>Note that this product is shipped as lyophilized powder to China customers.</i>
Purification:	Affinity Purified
Conjugation:	Unconjugated
Storage:	Store at -20°C as received.
Stability:	Stable for 12 months from date of receipt.
Predicted Protein Size:	48 kDa
Gene Name:	granulin
Database Link:	NP_002078 Entrez Gene 2896 Human P28799



[View online »](#)

Background:

Granulins are a family of secreted, glycosylated peptides that are cleaved from a single precursor protein with 7.5 repeats of a highly conserved 12-cysteine granulin/epithelin motif. The 88 kDa precursor protein, progranulin, is also called proepithelin and PC cell-derived growth factor. Cleavage of the signal peptide produces mature granulin which can be further cleaved into a variety of active, 6 kDa peptides. These smaller cleavage products are named granulin A, granulin B, granulin C, etc. Epithelins 1 and 2 are synonymous with granulins A and B, respectively. Both the peptides and intact granulin protein regulate cell growth. However, different members of the granulin protein family may act as inhibitors, stimulators, or have dual actions on cell growth. Granulin family members are important in normal development, wound healing, and tumorigenesis.

Synonyms:

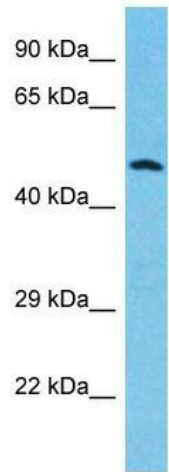
CLN11; GEP; GP88; PCDGF; PEPI; PGRN

Note:

Immunogen Sequence Homology: Human: 100%; Dog: 92%; Horse: 92%; Bovine: 92%; Rabbit: 85%

Protein Families:

Druggable Genome, Secreted Protein

Product images:

Host: Rabbit; Target Name: GRN; Sample Tissue: Thyroid Tumor lysates; Antibody Dilution: 1.0 ug/ml