

Product datasheet for **TA335040**

GNAQ Rabbit Polyclonal Antibody

Product data:

Product Type:	Primary Antibodies
Applications:	WB
Recommended Dilution:	WB
Reactivity:	Human
Host:	Rabbit
Isotype:	IgG
Clonality:	Polyclonal
Immunogen:	The immunogen for anti-GNAQ antibody: synthetic peptide directed towards the N terminal of human GNAQ. Synthetic peptide located within the following region: DKRGFTKLVYQNIFTAMQAMIRAMDTLKIPYKYEHNKAHAQLVREVDVEK
Formulation:	Liquid. Purified antibody supplied in 1x PBS buffer with 0.09% (w/v) sodium azide and 2% sucrose. <i>Note that this product is shipped as lyophilized powder to China customers.</i>
Purification:	Affinity Purified
Conjugation:	Unconjugated
Storage:	Store at -20°C as received.
Stability:	Stable for 12 months from date of receipt.
Predicted Protein Size:	42 kDa
Gene Name:	G protein subunit alpha q
Database Link:	NP_002063 Entrez Gene 2776 Human P50148
Background:	This locus encodes a guanine nucleotide-binding protein. The encoded protein, an alpha subunit in the Gq class, couples a seven-transmembrane domain receptor to activation of phospholipase C-beta. Mutations at this locus have been associated with problems in platelet activation and aggregation. A related pseudogene exists on chromosome 2. [provided by RefSeq, Nov 2010]
Synonyms:	CMC1; G-ALPHA-q; GAQ; SWS



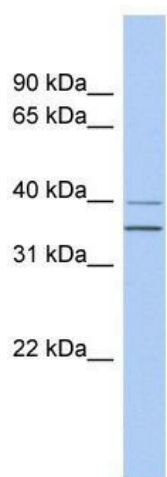
[View online »](#)

Note: Immunogen Sequence Homology: Dog: 100%; Pig: 100%; Rat: 100%; Horse: 100%; Human: 100%; Mouse: 100%; Bovine: 100%; Zebrafish: 100%; Guinea pig: 100%; Rabbit: 93%

Protein Families: Druggable Genome

Protein Pathways: Alzheimer's disease, Calcium signaling pathway, Gap junction, GnRH signaling pathway, Huntington's disease, Long-term depression, Long-term potentiation, Melanogenesis, Vascular smooth muscle contraction

Product images:



WB Suggested Anti-GNAQ Antibody Titration: 0.2-1 ug/ml; ELISA Titer: 1: 62500; Positive Control: Human brain