

Product datasheet for **TA335039**

GNAL Rabbit Polyclonal Antibody

Product data:

Product Type:	Primary Antibodies
Applications:	WB
Recommended Dilution:	WB
Reactivity:	Human
Host:	Rabbit
Isotype:	IgG
Clonality:	Polyclonal
Immunogen:	The immunogen for anti-GNAL antibody: synthetic peptide directed towards the C terminal of human GNAL. Synthetic peptide located within the following region: AEKVLGKSKIETYDFPEYANYTVPEDATPDAGEDPKVTRAKFFIRDLFLR
Formulation:	Liquid. Purified antibody supplied in 1x PBS buffer with 0.09% (w/v) sodium azide and 2% sucrose. <i>Note that this product is shipped as lyophilized powder to China customers.</i>
Purification:	Affinity Purified
Conjugation:	Unconjugated
Storage:	Store at -20°C as received.
Stability:	Stable for 12 months from date of receipt.
Predicted Protein Size:	50 kDa
Gene Name:	G protein subunit alpha L
Database Link:	NP_892023 Entrez Gene 2774 Human P38405
Background:	Guanine nucleotide-binding proteins (G proteins) are involved as modulators or transducers in various transmembrane signaling systems. G(olf) alpha mediates signal transduction within the olfactory neuroepithelium and the basal ganglia. It may be involved in some aspect of visual transduction, and in mediating the effect of one or more hormones/neurotransmitters.
Synonyms:	DYT25



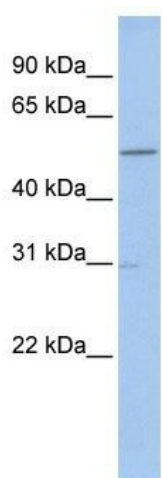
[View online »](#)

Note: Immunogen Sequence Homology: Dog: 100%; Pig: 100%; Rat: 100%; Goat: 100%; Horse: 100%; Human: 100%; Mouse: 100%; Bovine: 100%; Rabbit: 100%; Guinea pig: 100%; Zebrafish: 85%

Protein Families: Druggable Genome

Protein Pathways: Calcium signaling pathway, Olfactory transduction

Product images:



WB Suggested Anti-GNAL Antibody Titration: 0.2-1 ug/ml; ELISA Titer: 1: 62500; Positive Control: HeLa cell lysate. GNAL is supported by BioGPS gene expression data to be expressed in HeLa