

Product datasheet for **TA335038**

G protein alpha Inhibitor 2 (GNAI2) Rabbit Polyclonal Antibody

Product data:

Product Type:	Primary Antibodies
Applications:	WB
Recommended Dilution:	WB
Reactivity:	Human, Mouse
Host:	Rabbit
Isotype:	IgG
Clonality:	Polyclonal
Immunogen:	The immunogen for anti-GNAI2 antibody: synthetic peptide directed towards the C terminal of human GNAI2. Synthetic peptide located within the following region: EYTGANKYDEAASYIQSKFEDLNKRKDTKEIYTHFTCATDTKNVQVFDA
Formulation:	Liquid. Purified antibody supplied in 1x PBS buffer with 0.09% (w/v) sodium azide and 2% sucrose. <i>Note that this product is shipped as lyophilized powder to China customers.</i>
Purification:	Affinity Purified
Conjugation:	Unconjugated
Storage:	Store at -20°C as received.
Stability:	Stable for 12 months from date of receipt.
Predicted Protein Size:	40 kDa
Gene Name:	G protein subunit alpha i2
Database Link:	NP_002061 Entrez Gene 2771 Human P04899
Background:	Guanine nucleotide-binding proteins (G proteins) are involved as modulators or transducers in various transmembrane signaling systems. The G(i) proteins are involved in hormonal regulation of adenylate cyclase: they inhibit the cyclase in response to beta-adrenergic stimuli.
Synonyms:	GIP; GNAI2B; H_LUCA15.1; H_LUCA16.1



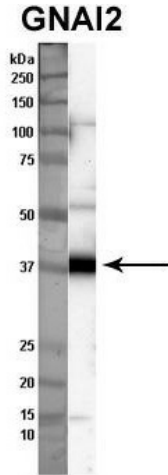
[View online »](#)

Note: Immunogen Sequence Homology: Pig: 100%; Rat: 100%; Goat: 100%; Horse: 100%; Human: 100%; Mouse: 100%; Sheep: 100%; Bovine: 100%; Rabbit: 100%; Guinea pig: 100%; Dog: 93%; Zebrafish: 93%

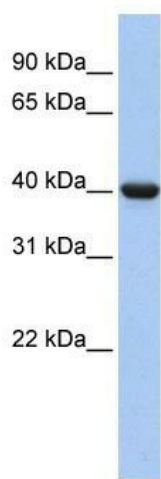
Protein Families: Druggable Genome

Protein Pathways: Axon guidance, Chemokine signaling pathway, Gap junction, Leukocyte transendothelial migration, Long-term depression, Melanogenesis, Progesterone-mediated oocyte maturation, Tight junction

Product images:



Sample Type: Nthy-ori cell lysate (50 ug); Primary Dilution: 1: 1000; Secondary Antibody: anti-rabbit HRP; Secondary Dilution: 1: 2000; Image Submitted By: Anonymous



WB Suggested Anti-GNAI2 Antibody Titration: 0.2-1 ug/ml; ELISA Titer: 1: 62500; Positive Control: Human Lung