

## Product datasheet for **TA335034**

### GCLM Rabbit Polyclonal Antibody

#### Product data:

Product Type:	Primary Antibodies
Applications:	IHC, WB
Recommended Dilution:	WB, IHC
Reactivity:	Human, Mouse
Host:	Rabbit
Isotype:	IgG
Clonality:	Polyclonal
Immunogen:	The immunogen for anti-GCLM antibody: synthetic peptide directed towards the middle region of human GCLM. Synthetic peptide located within the following region: KPNSNQVNLASCCVMPPDLTAFKQFDIQLLTHNDPKELLSEASFQALQ
Formulation:	Liquid. Purified antibody supplied in 1x PBS buffer with 0.09% (w/v) sodium azide and 2% sucrose.
Purification:	Affinity Purified
Conjugation:	Unconjugated
Storage:	Store at -20°C as received.
Stability:	Stable for 12 months from date of receipt.
Predicted Protein Size:	31 kDa
Gene Name:	glutamate-cysteine ligase modifier subunit
Database Link:	<a href="#">NP_002052</a> <a href="#">Entrez Gene 14630 Mouse</a> <a href="#">Entrez Gene 2730 Human</a> <a href="#">P48507</a>



[View online »](#)

**Background:** Glutamate-cysteine ligase, also known as gamma-glutamylcysteine synthetase, is the first rate limiting enzyme of glutathione synthesis. The enzyme consists of two subunits, a heavy catalytic subunit and a light regulatory subunit. Gamma glutamylcysteine synthetase deficiency has been implicated in some forms of hemolytic anemia. Glutamate-cysteine ligase, also known as gamma-glutamylcysteine synthetase, is the first rate limiting enzyme of glutathione synthesis. The enzyme consists of two subunits, a heavy catalytic subunit and a light regulatory subunit. Gamma glutamylcysteine synthetase deficiency has been implicated in some forms of hemolytic anemia. Publication Note: This RefSeq record includes a subset of the publications that are available for this gene. Please see the Entrez Gene record to access additional publications.

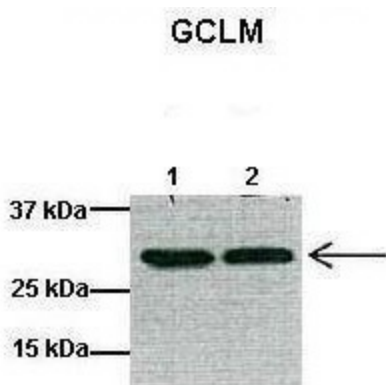
**Synonyms:** GLCLR

**Note:** Immunogen Sequence Homology: Dog: 100%; Pig: 100%; Rat: 100%; Horse: 100%; Human: 100%; Mouse: 100%; Bovine: 100%; Rabbit: 100%; Guinea pig: 100%; Zebrafish: 77%

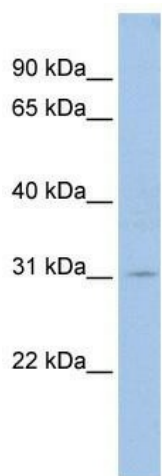
**Protein Families:** Druggable Genome

**Protein Pathways:** Glutathione metabolism, Metabolic pathways

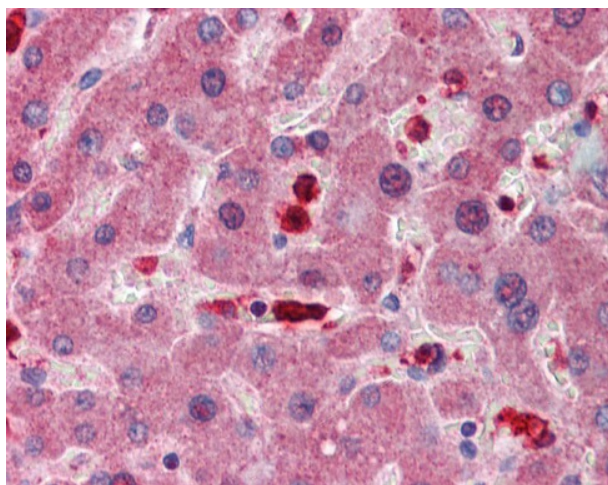
### Product images:



Lanes: 1: 40ug mouse heart lysate, 2: 40ug mouse heart lysate; Primary Antibody Dilution: 1: 1000; Secondary Antibody: Anti-rabbit HRP; Secondary Antibody Dilution: 1: 10000; Gene Name: GCLM; Submitted by: Anonymous;



WB Suggested Anti-GCLM Antibody Titration: 0.2-1 ug/ml; ELISA Titer: 1: 312500; Positive Control: MCF7 cell lysate



Liver