

## Product datasheet for **TA335032**

### Ferritin Heavy Chain (FTH1) Rabbit Polyclonal Antibody

#### Product data:

Product Type:	Primary Antibodies
Applications:	WB
Recommended Dilution:	WB
Reactivity:	Human
Host:	Rabbit
Isotype:	IgG
Clonality:	Polyclonal
Immunogen:	The immunogen for anti-FTH1 antibody: synthetic peptide directed towards the N terminal of human FTH1. Synthetic peptide located within the following region: MTTASTSQVRQNYHQDSEAAINRQINLELYASYVYLSMSYFDRDDVALK
Formulation:	Liquid. Purified antibody supplied in 1x PBS buffer with 0.09% (w/v) sodium azide and 2% sucrose. <i>Note that this product is shipped as lyophilized powder to China customers.</i>
Purification:	Affinity Purified
Conjugation:	Unconjugated
Storage:	Store at -20°C as received.
Stability:	Stable for 12 months from date of receipt.
Predicted Protein Size:	21 kDa
Gene Name:	ferritin heavy chain 1
Database Link:	<a href="#">NP_002023</a> <a href="#">Entrez Gene 2495 Human</a> <a href="#">P02794</a>
Background:	FTH1 is the heavy subunit of ferritin, the major intracellular iron storage protein in prokaryotes and eukaryotes. It is composed of 24 subunits of the heavy and light ferritin chains. Variation in ferritin subunit composition may affect the rates of iron uptake and release in different tissues. A major function of ferritin is the storage of iron in a soluble and nontoxic state. Defects in ferritin proteins are associated with several neurodegenerative diseases.



[View online »](#)

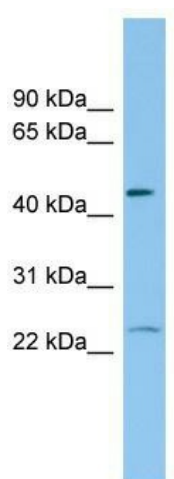
**Synonyms:** FHC; FTH; FTHL6; HFE5; PIG15; PLIF

**Note:** Immunogen Sequence Homology: Dog: 100%; Pig: 100%; Rat: 100%; Goat: 100%; Horse: 100%; Human: 100%; Sheep: 100%; Bovine: 100%; Rabbit: 100%; Mouse: 93%; Guinea pig: 93%

**Protein Families:** Druggable Genome

**Protein Pathways:** Porphyrin and chlorophyll metabolism

### Product images:



WB Suggested Anti-FTH1 Antibody Titration: 0.2-1 ug/ml; ELISA Titer: 1: 62500; Positive Control: HCT15 cell lysate. FTH1 is supported by BioGPS gene expression data to be expressed in HCT15