

## Product datasheet for **TA335031**

### FRK Rabbit Polyclonal Antibody

#### Product data:

Product Type:	Primary Antibodies
Applications:	WB
Recommended Dilution:	WB
Reactivity:	Human
Host:	Rabbit
Isotype:	IgG
Clonality:	Polyclonal
Immunogen:	The immunogen for anti-FRK antibody: synthetic peptide directed towards the middle region of human FRK. Synthetic peptide located within the following region: DLSYKTVDQWEIDRNSIQLLKRLGSGQFGEVWEGLWNNTTPVAVKTLKPG
Formulation:	Liquid. Purified antibody supplied in 1x PBS buffer with 0.09% (w/v) sodium azide and 2% sucrose. <i>Note that this product is shipped as lyophilized powder to China customers.</i>
Purification:	Affinity Purified
Conjugation:	Unconjugated
Storage:	Store at -20°C as received.
Stability:	Stable for 12 months from date of receipt.
Predicted Protein Size:	58 kDa
Gene Name:	fyn related Src family tyrosine kinase
Database Link:	<a href="#">NP_002022</a> <a href="#">Entrez Gene 2444 Human</a> <a href="#">P42685</a>
Background:	FRK belongs to the TYR family of protein kinases. This tyrosine kinase is a nuclear protein and may function during G1 and S phase of the cell cycle and suppress growth. The protein encoded by this gene belongs to the TYR family of protein kinases. This tyrosine kinase is a nuclear protein and may function during G1 and S phase of the cell cycle and suppress growth.
Synonyms:	GTK; PTK5; RAK

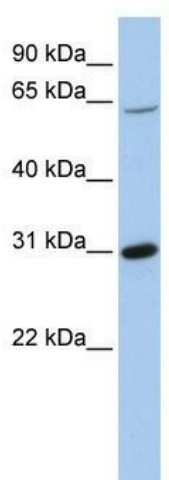


[View online »](#)

**Note:** Immunogen Sequence Homology: Pig: 100%; Rat: 100%; Human: 100%; Mouse: 100%; Rabbit: 100%; Horse: 93%; Bovine: 93%; Dog: 86%; Guinea pig: 79%

**Protein Families:** Druggable Genome, Protein Kinase

**Product images:**



WB Suggested Anti-FRK Antibody Titration: 0.2-1 ug/ml; ELISA Titer: 1: 312500; Positive Control: 721\_B cell lysate FRK is supported by BioGPS gene expression data to be expressed in 721\_B