

## Product datasheet for **TA335030**

### FRK Rabbit Polyclonal Antibody

#### Product data:

Product Type:	Primary Antibodies
Applications:	WB
Recommended Dilution:	WB
Reactivity:	Human
Host:	Rabbit
Isotype:	IgG
Clonality:	Polyclonal
Immunogen:	The immunogen for anti-FRK antibody: synthetic peptide directed towards the N terminal of human FRK. Synthetic peptide located within the following region: LCSPQSQRHGHYFVALFDYQARTAEDLSFRAGDKLQVLDLTLHEGWWFARH
Formulation:	Liquid. Purified antibody supplied in 1x PBS buffer with 0.09% (w/v) sodium azide and 2% sucrose. <i>Note that this product is shipped as lyophilized powder to China customers.</i>
Purification:	Affinity Purified
Conjugation:	Unconjugated
Storage:	Store at -20°C as received.
Stability:	Stable for 12 months from date of receipt.
Predicted Protein Size:	58 kDa
Gene Name:	fyn related Src family tyrosine kinase
Database Link:	<a href="#">NP_002022</a> <a href="#">Entrez Gene 2444 Human</a> <a href="#">P42685</a>
Background:	The specific function of FRK is not yet known. The protein encoded by this gene belongs to the TYR family of protein kinases. This tyrosine kinase is a nuclear protein and may function during G1 and S phase of the cell cycle and suppress growth.
Synonyms:	GTK; PTK5; RAK
Note:	Immunogen Sequence Homology: Pig: 100%; Human: 100%; Mouse: 100%; Rat: 93%; Bovine: 93%; Guinea pig: 93%; Dog: 92%; Horse: 85%

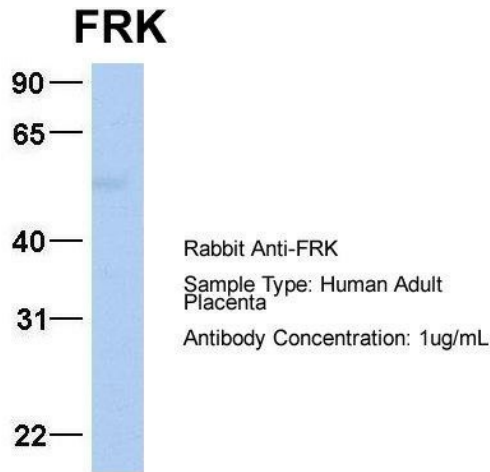


[View online »](#)

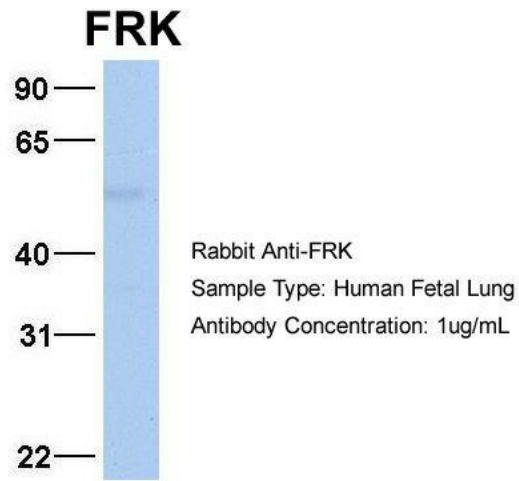
Protein Families: Druggable Genome, Protein Kinase

**Product images:**

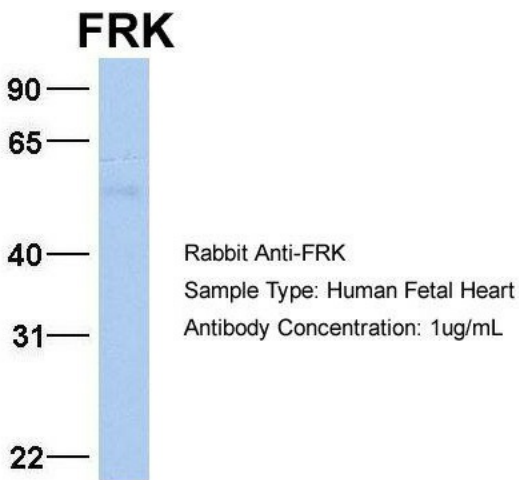
WB Suggested Anti-FRK Antibody Titration: 0.2-1 ug/ml; ELISA Titer: 1: 312500; Positive Control: Transfected 293T



Host: Rabbit; Target Name: FRK; Sample Tissue: Human Adult Placenta; Antibody Dilution: 1.0 ug/ml



Host: Rabbit; Target Name: FRK; Sample Tissue: Human Fetal Lung; Antibody Dilution: 1.0 ug/ml



Host: Rabbit; Target Name: FRK; Sample Tissue: Human Fetal Heart; Antibody Dilution: 1.0 ug/ml