

## Product datasheet for **TA335029**

### Fibromodulin (FMOD) Rabbit Polyclonal Antibody

#### Product data:

Product Type:	Primary Antibodies
Applications:	WB
Recommended Dilution:	WB
Reactivity:	Human
Host:	Rabbit
Isotype:	IgG
Clonality:	Polyclonal
Immunogen:	The immunogen for anti-FMOD antibody: synthetic peptide directed towards the N terminal of human FMOD. Synthetic peptide located within the following region: VYFQNNQITSIQEGVFDNATGLLWIALHGNQITSDKVGRKVFSLRHLER
Formulation:	Liquid. Purified antibody supplied in 1x PBS buffer with 0.09% (w/v) sodium azide and 2% sucrose. <i>Note that this product is shipped as lyophilized powder to China customers.</i>
Purification:	Affinity Purified
Conjugation:	Unconjugated
Storage:	Store at -20°C as received.
Stability:	Stable for 12 months from date of receipt.
Predicted Protein Size:	41 kDa
Gene Name:	fibromodulin
Database Link:	<a href="#">NP_002014</a> <a href="#">Entrez Gene 2331 Human</a> <a href="#">Q06828</a>



[View online »](#)

**Background:**

Fibromodulin is a member of a family of small interstitial proteoglycans, containing a central region composed of leucine-rich repeats with 4 keratan sulfate chains flanked by disulfide-bonded terminal domains. It may participate in the assembly of the extracellular matrix as it interacts with type I and type II collagen fibrils and inhibits fibrillogenesis in vitro. It may also regulate TGF-beta activities by sequestering TGF-beta into the extracellular matrix. Fibromodulin is a member of a family of small interstitial proteoglycans, containing a central region composed of leucine-rich repeats with 4 keratan sulfate chains flanked by disulfide-bonded terminal domains. It may participate in the assembly of the extracellular matrix as it interacts with type I and type II collagen fibrils and inhibits fibrillogenesis in vitro. It may also regulate TGF-beta activities by sequestering TGF-beta into the extracellular matrix. Publication Note: This RefSeq record includes a subset of the publications that are available for this gene. Please see the Entrez Gene record to access additional publications.

**Synonyms:**

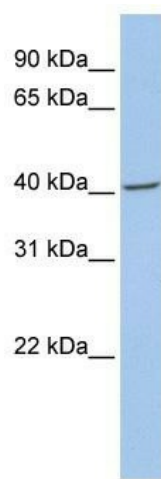
FM; SLRR2E

**Note:**

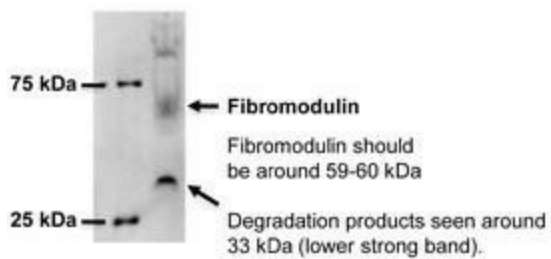
Immunogen Sequence Homology: Pig: 100%; Rat: 100%; Horse: 100%; Human: 100%; Mouse: 100%; Guinea pig: 100%; Dog: 93%; Bovine: 93%; Rabbit: 93%

**Protein Families:**

Druggable Genome, Secreted Protein

**Product images:**

WB Suggested Anti-FMOD Antibody Titration: 0.2-1 ug/ml; ELISA Titer: 1: 62500; Positive Control: 721\_B cell lysate



Sample Type: Equine Cartilage Explants  
Primary Dilution: 1: 500  
Secondary: Bio-Rad 170-5046  
(Dilution: 1: 100, 000)

Equine  
Cartilage  
Secretome