

Product datasheet for **TA335027**

FKBP25 (FKBP3) Rabbit Polyclonal Antibody

Product data:

Product Type:	Primary Antibodies
Applications:	WB
Recommended Dilution:	WB
Reactivity:	Human
Host:	Rabbit
Isotype:	IgG
Clonality:	Polyclonal
Immunogen:	The immunogen for anti-FKBP3 antibody: synthetic peptide directed towards the C terminal of human FKBP3. Synthetic peptide located within the following region: EALLTMSKGEKARLEIEPEWAYGKKGQPDAKIPPNAKLTFEVELVDID
Formulation:	Liquid. Purified antibody supplied in 1x PBS buffer with 0.09% (w/v) sodium azide and 2% sucrose. <i>Note that this product is shipped as lyophilized powder to China customers.</i>
Purification:	Affinity Purified
Conjugation:	Unconjugated
Storage:	Store at -20°C as received.
Stability:	Stable for 12 months from date of receipt.
Predicted Protein Size:	25 kDa
Gene Name:	FK506 binding protein 3
Database Link:	NP_002004 Entrez Gene 2287 Human Q00688



[View online »](#)

Background:

FKBP3 is a member of the immunophilin protein family, which play a role in immunoregulation and basic cellular processes involving protein folding and trafficking. FKBP3 is a cis-trans prolyl isomerase that binds the immunosuppressants FK506 and rapamycin, as well as histone deacetylases, the transcription factor YY1, casein kinase II, and nucleolin. It has a higher affinity for rapamycin than for FK506 and thus may be an important target molecule for immunosuppression by rapamycin. The protein encoded by this gene is a member of the immunophilin protein family, which play a role in immunoregulation and basic cellular processes involving protein folding and trafficking. This encoded protein is a cis-trans prolyl isomerase that binds the immunosuppressants FK506 and rapamycin. It has a higher affinity for rapamycin than for FK506 and thus may be an important target molecule for immunosuppression by rapamycin.

Synonyms:

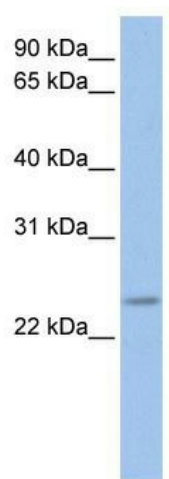
FKBP-3; FKBP-25; FKBP25; PPIase

Note:

Immunogen Sequence Homology: Dog: 100%; Pig: 100%; Rat: 100%; Horse: 100%; Human: 100%; Mouse: 100%; Bovine: 100%; Rabbit: 100%; Guinea pig: 100%; Zebrafish: 93%

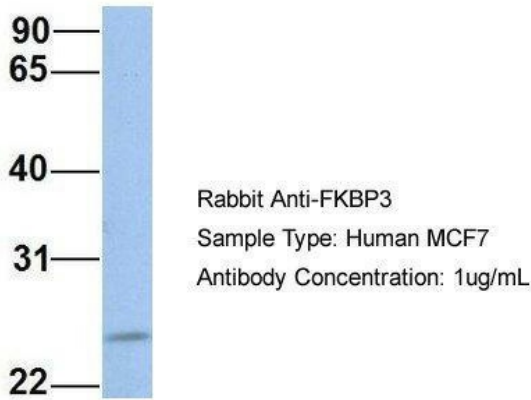
Protein Families:

Druggable Genome, Stem cell - Pluripotency

Product images:

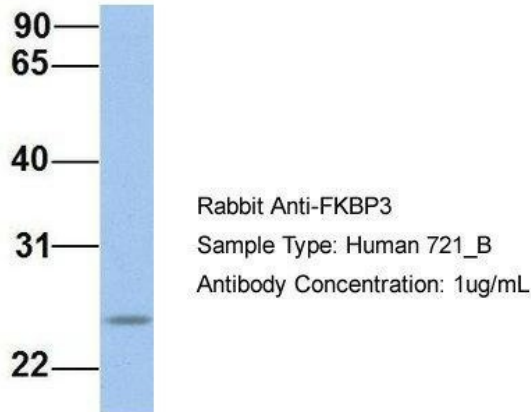
WB Suggested Anti-FKBP3 Antibody Titration: 0.2-1 ug/ml; ELISA Titer: 1: 312500; Positive Control: Jurkat cell lysate FKBP3 is supported by BioGPS gene expression data to be expressed in Jurkat

FKBP3



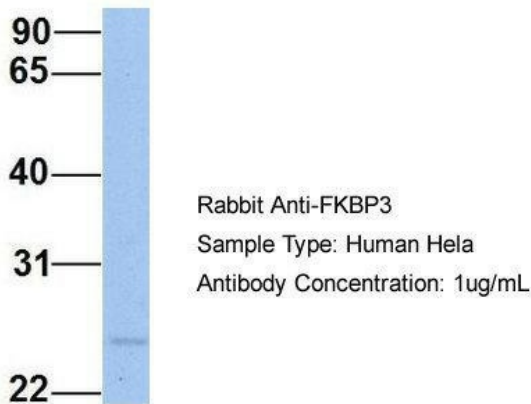
Host: Rabbit; Target Name: FKBP3; Sample Tissue: Human MCF7; Antibody Dilution: 1.0 ug/ml; FKBP3 is supported by BioGPS gene expression data to be expressed in MCF7

FKBP3



Host: Rabbit; Target Name: FKBP3; Sample Tissue: Human 721_B; Antibody Dilution: 1.0 ug/ml; FKBP3 is supported by BioGPS gene expression data to be expressed in 721_B

FKBP3



Host: Rabbit; Target Name: FKBP3; Sample Tissue: Human HeLa; Antibody Dilution: 1.0 ug/ml; FKBP3 is supported by BioGPS gene expression data to be expressed in HeLa