

## Product datasheet for **TA335025**

### FES Rabbit Polyclonal Antibody

#### Product data:

Product Type:	Primary Antibodies
Applications:	WB
Recommended Dilution:	WB
Reactivity:	Human
Host:	Rabbit
Isotype:	IgG
Clonality:	Polyclonal
Immunogen:	The immunogen for anti-FES antibody: synthetic peptide directed towards the N terminal of human FES. Synthetic peptide located within the following region: ARDSAQAKRKYQEASKDKDRDKAKDKYVRSLWKLFAHHNRYVLGVRAAQL
Formulation:	Liquid. Purified antibody supplied in 1x PBS buffer with 0.09% (w/v) sodium azide and 2% sucrose. <i>Note that this product is shipped as lyophilized powder to China customers.</i>
Purification:	Affinity Purified
Conjugation:	Unconjugated
Storage:	Store at -20°C as received.
Stability:	Stable for 12 months from date of receipt.
Predicted Protein Size:	93 kDa
Gene Name:	FES proto-oncogene, tyrosine kinase
Database Link:	<a href="#">NP_001996</a> <a href="#">Entrez Gene 2242 Human</a> <a href="#">P07332</a>



[View online »](#)

**Background:**

FES is the human cellular counterpart of a feline sarcoma retrovirus protein with transforming capabilities. FES has tyrosine-specific protein kinase activity and that activity is required for maintenance of cellular transformation. Its chromosomal location has linked it to a specific translocation event identified in patients with acute promyelocytic leukemia but it is also involved in normal hematopoiesis. This gene encodes the human cellular counterpart of a feline sarcoma retrovirus protein with transforming capabilities. The gene product has tyrosine-specific protein kinase activity and that activity is required for maintenance of cellular transformation. Its chromosomal location has linked it to a specific translocation event identified in patients with acute promyelocytic leukemia but it is also involved in normal hematopoiesis. A truncated transcript has been identified that is generated utilizing a start site in one of the far downstream exons but a protein product associated with this transcript has not been identified. Publication Note: This RefSeq record includes a subset of the publications that are available for this gene. Please see the Entrez Gene record to access additional publications.

**Synonyms:**

FPS

**Note:**

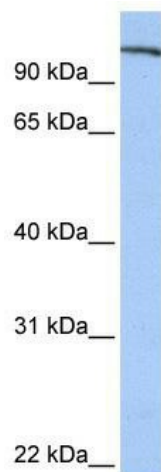
Immunogen Sequence Homology: Dog: 100%; Pig: 100%; Rat: 100%; Human: 100%; Mouse: 100%; Rabbit: 100%; Bovine: 93%; Guinea pig: 88%; Zebrafish: 85%

**Protein Families:**

Druggable Genome, Protein Kinase

**Protein Pathways:**

Axon guidance

**Product images:**

WB Suggested Anti-FES Antibody Titration: 0.2-1 ug/ml; Positive Control: Human Placenta