

Product datasheet for **TA335024**

FCN1 Rabbit Polyclonal Antibody

Product data:

Product Type:	Primary Antibodies
Applications:	WB
Recommended Dilution:	WB
Reactivity:	Human
Host:	Rabbit
Isotype:	IgG
Clonality:	Polyclonal
Immunogen:	The immunogen for anti-FCN1 antibody: synthetic peptide directed towards the middle region of human FCN1. Synthetic peptide located within the following region: HQFAKYKSFKVADEAEKYKLVLGAFVGGGAGNSLTGHNNNFFSTKDQDND
Formulation:	Liquid. Purified antibody supplied in 1x PBS buffer with 0.09% (w/v) sodium azide and 2% sucrose. <i>Note that this product is shipped as lyophilized powder to China customers.</i>
Purification:	Affinity Purified
Conjugation:	Unconjugated
Storage:	Store at -20°C as received.
Stability:	Stable for 12 months from date of receipt.
Predicted Protein Size:	32 kDa
Gene Name:	ficolin 1
Database Link:	NP_001994 Entrez Gene 2219 Human O00602



[View online »](#)

Background:

The ficolin family of proteins are characterized by the presence of a leader peptide, a short N-terminal segment, followed by a collagen-like region, and a C-terminal fibrinogen-like domain. The collagen-like and the fibrinogen-like domains are also found separately in other proteins such as complement protein C1q, C-type lectins known as collectins, and tenascins. However, all these proteins recognize different targets, and are functionally distinct. Ficolin 1(FCN1) is predominantly expressed in the peripheral blood leukocytes, and has been postulated to function as a plasma protein with elastin-binding activity.

Synonyms:

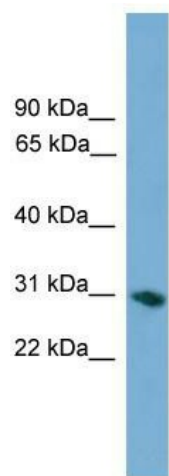
FCNM

Note:

Immunogen Sequence Homology: Human: 100%; Horse: 79%

Protein Families:

Druggable Genome, Secreted Protein

Product images:

WB Suggested Anti-FCN1 Antibody Titration: 0.2-1 ug/ml; ELISA Titer: 1: 1562500; Positive Control: Human Placenta