

## Product datasheet for **TA335021**

### EPS15 Rabbit Polyclonal Antibody

#### Product data:

Product Type:	Primary Antibodies
Applications:	WB
Recommended Dilution:	WB
Reactivity:	Human
Host:	Rabbit
Isotype:	IgG
Clonality:	Polyclonal
Immunogen:	The immunogen for anti-EPS15 antibody: synthetic peptide directed towards the C terminal of human EPS15. Synthetic peptide located within the following region: LDSPDPFKLNDFQPFPGNDSPKEKDPEIFCDPFTSATTTTNKEADPSNF
Formulation:	Liquid. Purified antibody supplied in 1x PBS buffer with 0.09% (w/v) sodium azide and 2% sucrose. <i>Note that this product is shipped as lyophilized powder to China customers.</i>
Purification:	Affinity Purified
Conjugation:	Unconjugated
Storage:	Store at -20°C as received.
Stability:	Stable for 12 months from date of receipt.
Predicted Protein Size:	99 kDa
Gene Name:	epidermal growth factor receptor pathway substrate 15
Database Link:	<a href="#">NP_001972</a> <a href="#">Entrez Gene 2060 Human P42566</a>



[View online »](#)

**Background:**

EPS15 is a protein that is part of the EGFR pathway. The protein is present at clatherin-coated pits and is involved in receptor-mediated endocytosis of EGF. Notably, this gene is rearranged with the HRX/ALL/MLL gene in acute myelogenous leukemias. This gene encodes a protein that is part of the EGFR pathway. The protein is present at clatherin-coated pits and is involved in receptor-mediated endocytosis of EGF. Notably, this gene is rearranged with the HRX/ALL/MLL gene in acute myelogenous leukemias. Alternate transcriptional splice variants of this gene have been observed but have not been thoroughly characterized. Publication Note: This RefSeq record includes a subset of the publications that are available for this gene. Please see the Entrez Gene record to access additional publications.

**Synonyms:**

AF-1P; AF1P; MLLT5

**Note:**

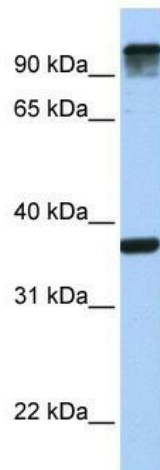
Immunogen Sequence Homology: Pig: 100%; Rat: 100%; Horse: 100%; Human: 100%; Mouse: 100%; Bovine: 100%; Rabbit: 100%; Dog: 93%; Guinea pig: 79%

**Protein Families:**

Druggable Genome

**Protein Pathways:**

Endocytosis

**Product images:**

WB Suggested Anti-EPS15 Antibody Titration: 0.2-1 ug/ml; Positive Control: 721\_B cell lysate EPS15 is supported by BioGPS gene expression data to be expressed in 721\_B