

Product datasheet for **TA335020**

ARF6 Rabbit Polyclonal Antibody

Product data:

Product Type:	Primary Antibodies
Applications:	IHC, WB
Recommended Dilution:	WB
Reactivity:	Human
Host:	Rabbit
Isotype:	IgG
Clonality:	Polyclonal
Immunogen:	The immunogen for anti-ARF6 antibody: synthetic peptide directed towards the middle region of human ARF6. Synthetic peptide located within the following region: REMRDAIILIFANKQDLDPAMKPHEIQEKLGLTRIRDRNWYVQPSCATSG
Formulation:	Liquid. Purified antibody supplied in 1x PBS buffer with 0.09% (w/v) sodium azide and 2% sucrose. <i>Note that this product is shipped as lyophilized powder to China customers.</i>
Purification:	Affinity Purified
Conjugation:	Unconjugated
Storage:	Store at -20°C as received.
Stability:	Stable for 12 months from date of receipt.
Predicted Protein Size:	20 kDa
Gene Name:	ADP ribosylation factor 6
Database Link:	NP_001654 Entrez Gene 382 Human P62330



[View online »](#)

Background:

ARF6 is a member of the human ARF family, which is part of the RAS superfamily. They are small guanine nucleotide-binding proteins that stimulate the ADP-ribosyltransferase activity of cholera toxin and play a role in vesicular trafficking and as activators of phospholipase D. ARF6 is localized to the plasma membrane, and regulates vesicular trafficking, remodelling of membrane lipids, and signaling pathways that lead to actin remodeling. This gene encodes a member of the human ARF gene family, which is part of the RAS superfamily. The ARF genes encode small guanine nucleotide-binding proteins that stimulate the ADP-ribosyltransferase activity of cholera toxin and play a role in vesicular trafficking and as activators of phospholipase D. The product of this gene is localized to the plasma membrane, and regulates vesicular trafficking, remodelling of membrane lipids, and signaling pathways that lead to actin remodeling. A pseudogene of this gene is located on chromosome 7. Publication Note: This RefSeq record includes a subset of the publications that are available for this gene. Please see the Entrez Gene record to access additional publications.

Synonyms:

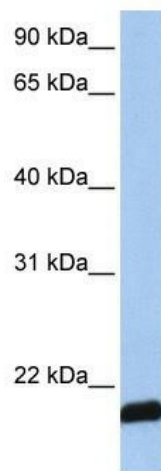
DKFZp564M0264

Note:

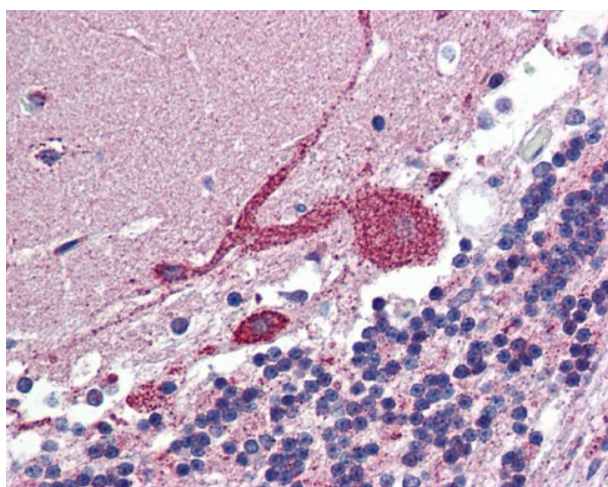
Immunogen Sequence Homology: Dog: 100%; Pig: 100%; Rat: 100%; Horse: 100%; Human: 100%; Mouse: 100%; Sheep: 100%; Bovine: 100%; Rabbit: 100%; Zebrafish: 100%; Guinea pig: 100%

Protein Pathways:

Endocytosis, Fc gamma R-mediated phagocytosis

Product images:

WB Suggested Anti-ARF6 Antibody Titration: 0.2-1 ug/ml; Positive Control: MCF7 cell lysate ARF6 is strongly supported by BioGPS gene expression data to be expressed in Human MCF7 cells



IHC Information: Paraffin embedded brain, cerebellum tissue, tested with an antibody Dilution of 5 ug/ml.