

## Product datasheet for **TA335015**

### IFRD1 Rabbit Polyclonal Antibody

#### Product data:

Product Type:	Primary Antibodies
Applications:	WB
Recommended Dilution:	WB
Reactivity:	Human
Host:	Rabbit
Isotype:	IgG
Clonality:	Polyclonal
Immunogen:	The immunogen for anti-IFRD1 antibody: synthetic peptide directed towards the middle region of human IFRD1. Synthetic peptide located within the following region: LALLFELARGIESDFFYEDMESLTQMLRALATDGNKHKRAKVDKRRKQRSVF
Formulation:	Liquid. Purified antibody supplied in 1x PBS buffer with 0.09% (w/v) sodium azide and 2% sucrose. <i>Note that this product is shipped as lyophilized powder to China customers.</i>
Purification:	Affinity Purified
Conjugation:	Unconjugated
Storage:	Store at -20°C as received.
Stability:	Stable for 12 months from date of receipt.
Predicted Protein Size:	50 kDa
Gene Name:	interferon related developmental regulator 1
Database Link:	<a href="#">NP_001541</a> <a href="#">Entrez Gene 3475 Human</a> <a href="#">O00458</a>
Background:	IFRD1 belongs to the IFRD family. It could play a role in regulating gene activity in the proliferative and/or differentiative pathways induced by NGF. IFRD1 may be an autocrine factor that attenuates or amplifies the initial ligand-induced signal.
Synonyms:	PC4; TIS7
Note:	Immunogen Sequence Homology: Dog: 100%; Pig: 100%; Rat: 100%; Horse: 100%; Human: 100%; Mouse: 100%; Bovine: 100%; Rabbit: 100%; Guinea pig: 100%; Zebrafish: 92%

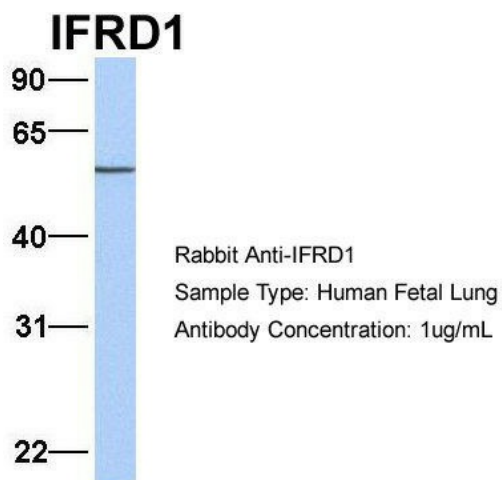


[View online »](#)

Product images:



WB Suggested Anti-IFRD1 Antibody Titration: 0.2-1 ug/ml; Positive Control: Human heart



Host: Rabbit; Target Name: IFRD1; Sample Tissue: Human Fetal Lung; Antibody Dilution: 1.0 ug/ml