

Product datasheet for **TA335008**

GDNF Receptor alpha 2 (GFRA2) Rabbit Polyclonal Antibody

Product data:

Product Type:	Primary Antibodies
Applications:	WB
Recommended Dilution:	WB
Reactivity:	Human
Host:	Rabbit
Isotype:	IgG
Clonality:	Polyclonal
Immunogen:	The immunogen for anti-GFRA2 antibody: synthetic peptide directed towards the C terminal of human GFRA2. Synthetic peptide located within the following region: NVSPKGPSFQATQAPRVEKTPSLPDDLSDSTSLGTSVITTCTSVQEQGLK
Formulation:	Liquid. Purified antibody supplied in 1x PBS buffer with 0.09% (w/v) sodium azide and 2% sucrose. <i>Note that this product is shipped as lyophilized powder to China customers.</i>
Purification:	Affinity Purified
Conjugation:	Unconjugated
Storage:	Store at -20°C as received.
Stability:	Stable for 12 months from date of receipt.
Predicted Protein Size:	47 kDa
Gene Name:	GDNF family receptor alpha 2
Database Link:	NP_001486 Entrez Gene 2675 Human O00451



[View online »](#)

Background:

Glial cell line-derived neurotrophic factor (GDNF) and neurturin (NTN) are two structurally related, potent neurotrophic factors that play key roles in the control of neuron survival and differentiation. GFRA2 is a member of the GDNF receptor family. It is a glycosylphosphatidylinositol(GPI)-linked cell surface receptor for both GDNF and NTN, and mediates activation of the RET tyrosine kinase receptor. This encoded protein acts preferentially as a receptor for NTN compared to its other family member, GDNF family receptor alpha 1. Glial cell line-derived neurotrophic factor (GDNF) and neurturin (NTN) are two structurally related, potent neurotrophic factors that play key roles in the control of neuron survival and differentiation. The protein encoded by this gene is a member of the GDNF receptor family. It is a glycosylphosphatidylinositol(GPI)-linked cell surface receptor for both GDNF and NTN, and mediates activation of the RET tyrosine kinase receptor. This encoded protein acts preferentially as a receptor for NTN compared to its other family member, GDNF family receptor alpha 1. This gene is a candidate gene for RET-associated diseases. Publication Note: This RefSeq record includes a subset of the publications that are available for this gene. Please see the Entrez Gene record to access additional publications.

Synonyms:

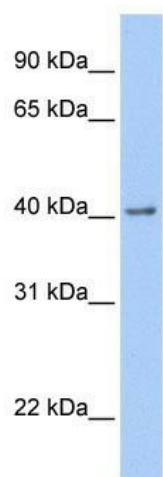
GDNFRB; NRTNR-ALPHA; NTNRA; RETL2; TRNR2

Note:

Immunogen Sequence Homology: Dog: 100%; Pig: 100%; Rat: 100%; Horse: 100%; Human: 100%; Mouse: 100%; Rabbit: 100%; Bovine: 93%; Guinea pig: 93%

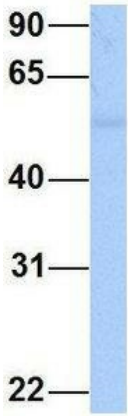
Protein Families:

Druggable Genome

Product images:

WB Suggested Anti-GFRA2 Antibody Titration: 0.2-1 ug/ml; Positive Control: Human brain

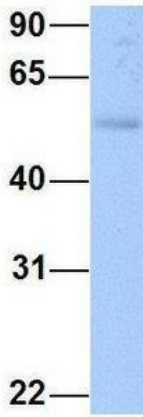
GFRA2



Rabbit Anti-GFRA2
Sample Type: Human Adult Placenta
Antibody Concentration: 1ug/mL

Host: Rabbit; Target Name: GFRA2; Sample Tissue: Human Adult Placenta; Antibody Dilution: 1.0 ug/ml

GFRA2



Rabbit Anti-GFRA2
Sample Type: Human Fetal Muscle
Antibody Concentration: 1ug/mL

Host: Rabbit; Target Name: GFRA2; Sample Tissue: Human Fetal Muscle; Antibody Dilution: 1.0 ug/ml