

## Product datasheet for **TA335006**

### FRZB Rabbit Polyclonal Antibody

#### Product data:

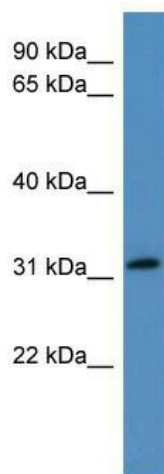
Product Type:	Primary Antibodies
Applications:	WB
Recommended Dilution:	WB
Reactivity:	Human
Host:	Rabbit
Isotype:	IgG
Clonality:	Polyclonal
Immunogen:	The immunogen for anti-FRZB antibody: synthetic peptide directed towards the N terminal of human FRZB. Synthetic peptide located within the following region: HSTQANAILAIEQFEGLLGTHCSPDLLFFLCAMYAPICTIDFQHEPIKPC
Formulation:	Liquid. Purified antibody supplied in 1x PBS buffer with 0.09% (w/v) sodium azide and 2% sucrose. <i>Note that this product is shipped as lyophilized powder to China customers.</i>
Purification:	Affinity Purified
Conjugation:	Unconjugated
Storage:	Store at -20°C as received.
Stability:	Stable for 12 months from date of receipt.
Predicted Protein Size:	36 kDa
Gene Name:	frizzled-related protein
Database Link:	<a href="#">NP_001454</a> <a href="#">Entrez Gene 2487 Human</a> <a href="#">Q92765</a>
Background:	The protein encoded by this gene is a secreted protein that is involved in the regulation of bone development. Defects in this gene are a cause of female-specific osteoarthritis (OA) susceptibility.
Synonyms:	FRE; FRITZ; FRP-3; FRZB-1; FRZB-PEN; FRZB1; FZRB; hFIZ; OS1; SFRP3; SRFP3
Note:	Immunogen Sequence Homology: Pig: 100%; Rat: 100%; Horse: 100%; Human: 100%; Bovine: 100%; Rabbit: 100%; Guinea pig: 100%; Mouse: 93%; Zebrafish: 93%; Dog: 79%



[View online »](#)

**Protein Families:** Druggable Genome, ES Cell Differentiation/IPS, Secreted Protein, Stem cell relevant signaling - Wnt Signaling pathway

**Product images:**



WB Suggested Anti-FRZB Antibody Titration: 0.2-1 ug/ml; ELISA Titer: 1: 312500; Positive Control: Human kidney