

Product datasheet for **TA335005**

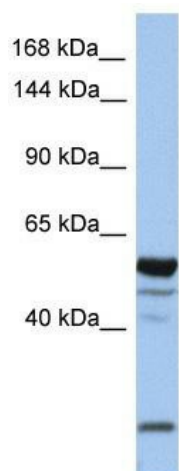
EPB41L2 (EPB41L2) Rabbit Polyclonal Antibody

Product data:

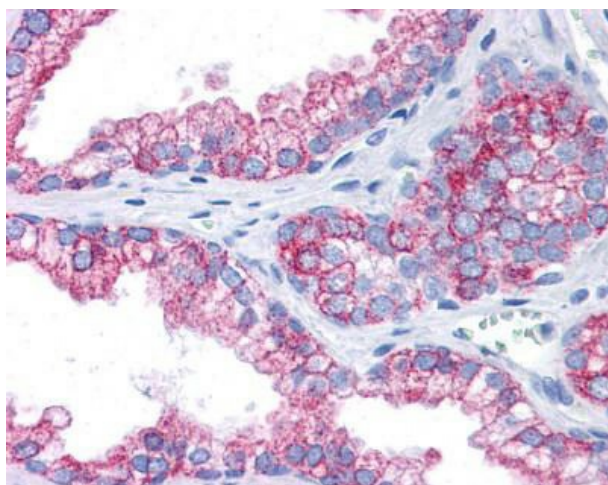
Product Type:	Primary Antibodies
Applications:	IHC, WB
Recommended Dilution:	WB, IHC
Reactivity:	Human
Host:	Rabbit
Isotype:	IgG
Clonality:	Polyclonal
Immunogen:	The immunogen for anti-EPB41L2 antibody: synthetic peptide directed towards the middle region of human EPB41L2. Synthetic peptide located within the following region: AKRLWKVCVEHHTFYRLVSPEQPPKAKFLTLGSKFRYSGRTQAQTRQAST
Formulation:	Liquid. Purified antibody supplied in 1x PBS buffer with 0.09% (w/v) sodium azide and 2% sucrose. <i>Note that this product is shipped as lyophilized powder to China customers.</i>
Purification:	Affinity Purified
Conjugation:	Unconjugated
Storage:	Store at -20°C as received.
Stability:	Stable for 12 months from date of receipt.
Predicted Protein Size:	66 kDa
Gene Name:	erythrocyte membrane protein band 4.1 like 2
Database Link:	NP_001129026 Entrez Gene 2037 Human O43491
Background:	EPB41L2 contains 1 FERM domain. The exact function of EPB41L2 remains unknown.
Synonyms:	4.1-G; 4.1G
Note:	Immunogen Sequence Homology: Dog: 100%; Pig: 100%; Rat: 100%; Horse: 100%; Human: 100%; Mouse: 100%; Bovine: 100%; Rabbit: 100%; Guinea pig: 100%; Zebrafish: 86%
Protein Pathways:	Tight junction



[View online »](#)

Product images:

WB Suggested Anti-EPB41L2 Antibody Titration: 1 ug/ml; Positive Control: MCF-7 whole cell lysates



Human Prostate