

Product datasheet for **TA335002**

AMN1 Rabbit Polyclonal Antibody

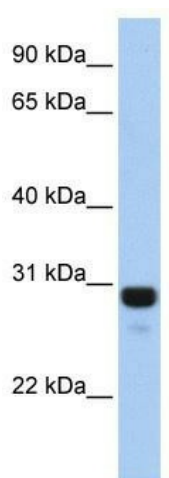
Product data:

Product Type:	Primary Antibodies
Applications:	WB
Recommended Dilution:	WB
Reactivity:	Human
Host:	Rabbit
Isotype:	IgG
Clonality:	Polyclonal
Immunogen:	The immunogen for anti-AMN1 antibody: synthetic peptide directed towards the N terminal of human AMN1. Synthetic peptide located within the following region: PRPRRVSQLLDLCLWCFMKNISRYLTDIKPLPPNIKDRLIKIMSMQGQIT
Formulation:	Liquid. Purified antibody supplied in 1x PBS buffer with 0.09% (w/v) sodium azide and 2% sucrose.
Purification:	Affinity Purified
Conjugation:	Unconjugated
Storage:	Store at -20°C as received.
Stability:	Stable for 12 months from date of receipt.
Predicted Protein Size:	28 kDa
Gene Name:	antagonist of mitotic exit network 1 homolog
Database Link:	NP_001106873 Entrez Gene 196394 Human Q8IY45
Background:	AMN1 belongs to the AMN1 family. The exact function of AMN1 remains unknown.
Synonyms:	antagonist of mitotic exit network 1 homolog; antagonist of mitotic exit network 1 homolog (S. cerevisiae)
Note:	Immunogen Sequence Homology: Dog: 100%; Pig: 100%; Horse: 100%; Human: 100%; Bovine: 100%; Rabbit: 100%; Guinea pig: 100%; Rat: 92%



[View online »](#)

Product images:



WB Suggested Anti-AMN1 Antibody Titration: 0.2-1 ug/ml; Positive Control: Human Lung