

Product datasheet for **TA335001**

GSG1L Rabbit Polyclonal Antibody

Product data:

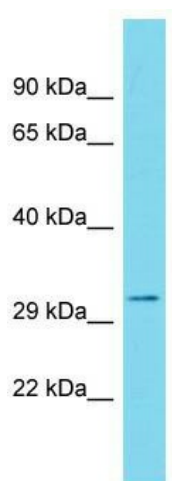
Product Type:	Primary Antibodies
Applications:	WB
Recommended Dilution:	WB
Reactivity:	Human
Host:	Rabbit
Isotype:	IgG
Clonality:	Polyclonal
Immunogen:	The immunogen for anti-GSG1L antibody is: synthetic peptide directed towards the N-terminal region of Human GSG1L. Synthetic peptide located within the following region: NFHTGIWYSCEEELSGLGKCRSFIDLAPASEKGVLSVSEVLYILLL
Formulation:	Liquid. Purified antibody supplied in 1x PBS buffer with 0.09% (w/v) sodium azide and 2% sucrose. <i>Note that this product is shipped as lyophilized powder to China customers.</i>
Purification:	Affinity Purified
Conjugation:	Unconjugated
Storage:	Store at -20°C as received.
Stability:	Stable for 12 months from date of receipt.
Predicted Protein Size:	30 kDa
Gene Name:	GSG1-like
Database Link:	NP_001103233 Entrez Gene 146395 Human Q6UXU4
Background:	As a component of the inner core of AMPAR complex, GSG1L modifies AMPA receptor (AMPA) gating.
Synonyms:	PRO19651
Note:	Immunogen Sequence Homology: Dog: 100%; Pig: 100%; Rat: 100%; Human: 100%; Mouse: 100%; Bovine: 100%; Zebrafish: 93%



[View online »](#)

Protein Families: Transmembrane

Product images:



Host: Rabbit; Target Name: GSG1L; Sample
Tissue: Stomach Tumor lysates; Antibody
Dilution: 1.0 ug/ml