

## Product datasheet for **TA334999**

### RRAS2 Rabbit Polyclonal Antibody

#### Product data:

Product Type:	Primary Antibodies
Applications:	WB
Recommended Dilution:	WB
Reactivity:	Human
Host:	Rabbit
Isotype:	IgG
Clonality:	Polyclonal
Immunogen:	The immunogen for anti-RRAS2 antibody is: synthetic peptide directed towards the C-terminal region of Human RRAS2. Synthetic peptide located within the following region: EASAKIRMNVDQAFHELVRVIRKFQEQCPPSPEPTRKEKDKKGCHCVIF
Formulation:	Liquid. Purified antibody supplied in 1x PBS buffer with 0.09% (w/v) sodium azide and 2% sucrose. <i>Note that this product is shipped as lyophilized powder to China customers.</i>
Purification:	Affinity Purified
Conjugation:	Unconjugated
Storage:	Store at -20°C as received.
Stability:	Stable for 12 months from date of receipt.
Predicted Protein Size:	22 kDa
Gene Name:	related RAS viral (r-ras) oncogene homolog 2
Database Link:	<a href="#">NP_036382</a> <a href="#">Entrez Gene 22800 Human</a> <a href="#">P62070</a>

**Background:** This gene encodes a member of the R-Ras subfamily of Ras-like small GTPases. The encoded protein associates with the plasma membrane and may function as a signal transducer. This protein may play an important role in activating signal transduction pathways that control cell proliferation. Mutations in this gene are associated with the growth of certain tumors. Pseudogenes of this gene are found on chromosomes 1 and 2. Alternate splicing results in multiple transcript variants.



[View online »](#)

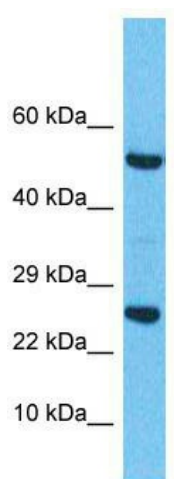
**Synonyms:** TC21

**Note:** Immunogen Sequence Homology: Dog: 100%; Pig: 100%; Rat: 100%; Horse: 100%; Human: 100%; Mouse: 100%; Bovine: 100%; Rabbit: 100%; Zebrafish: 100%; Guinea pig: 100%

**Protein Families:** Druggable Genome

**Protein Pathways:** MAPK signaling pathway, Regulation of actin cytoskeleton, Tight junction

**Product images:**



Host: Rabbit; Target Name: RRAS2; Sample Tissue: Esophagus Tumor lysates; Antibody Dilution: 1.0 ug/ml