

## Product datasheet for **TA334998**

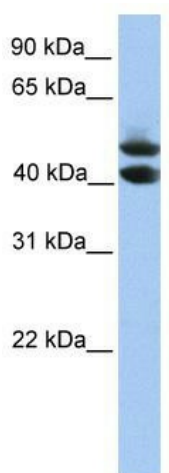
### SOHLH1 Rabbit Polyclonal Antibody

#### Product data:

Product Type:	Primary Antibodies
Applications:	WB
Recommended Dilution:	WB
Reactivity:	Human
Host:	Rabbit
Isotype:	IgG
Clonality:	Polyclonal
Immunogen:	The immunogen for anti-SOHLH1 antibody: synthetic peptide directed towards the C terminal of human SOHLH1. Synthetic peptide located within the following region: PAWAPAESSPLDVGEPGLGDPQLGSQELQDSPLEPWGLDVDCAGLALKD
Formulation:	Liquid. Purified antibody supplied in 1x PBS buffer with 0.09% (w/v) sodium azide and 2% sucrose.
Purification:	Affinity Purified
Conjugation:	Unconjugated
Storage:	Store at -20°C as received.
Stability:	Stable for 12 months from date of receipt.
Predicted Protein Size:	41 kDa
Gene Name:	spermatogenesis and oogenesis specific basic helix-loop-helix 1
Database Link:	<a href="#">NP_001095147</a> <a href="#">Entrez Gene 402381 Human</a> <a href="#">Q5JUK2</a>
Background:	SOHLH1 contains 1 basic helix-loop-helix (bHLH) domain. It is a probable transcription factor required during spermatogenesis and oogenesis.
Synonyms:	bA100C15.3; bHLHe80; C9orf157; NOHLH; SPATA27; TEB2
Note:	Immunogen Sequence Homology: Human: 100%; Horse: 79%; Yeast: 75%



[View online »](#)

**Product images:**

WB Suggested Anti-SOHLH1 Antibody Titration:  
0.2-1 ug/ml; Positive Control: HepG2 cell lysate