

## Product datasheet for **TA334997**

### MMD2 Rabbit Polyclonal Antibody

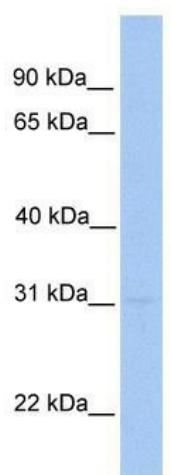
#### Product data:

Product Type:	Primary Antibodies
Applications:	WB
Recommended Dilution:	WB
Reactivity:	Human
Host:	Rabbit
Isotype:	IgG
Clonality:	Polyclonal
Immunogen:	The immunogen for anti-MMD2 antibody: synthetic peptide directed towards the N terminal of human MMD2. Synthetic peptide located within the following region: FAPRLLD <sup>F</sup> QKTKYARFMNHRVPAHKRYQPTEYEHAANCATHAFWIIPSIL
Formulation:	Liquid. Purified antibody supplied in 1x PBS buffer with 0.09% (w/v) sodium azide and 2% sucrose.
Purification:	Affinity Purified
Conjugation:	Unconjugated
Storage:	Store at -20°C as received.
Stability:	Stable for 12 months from date of receipt.
Predicted Protein Size:	31 kDa
Gene Name:	monocyte to macrophage differentiation associated 2
Database Link:	<a href="#">NP_001094070</a> <a href="#">Entrez Gene 221938 Human</a> <a href="#">Q8IY49</a>
Background:	MMD2 contains 1 COMM domain. The exact function of MMD2 remains unknown.
Synonyms:	PAQR10
Note:	Immunogen Sequence Homology: Dog: 100%; Pig: 100%; Rat: 100%; Horse: 100%; Human: 100%; Bovine: 100%; Rabbit: 100%; Mouse: 93%; Guinea pig: 93%; Zebrafish: 79%
Protein Families:	Druggable Genome, Transmembrane



[View online »](#)

Product images:



WB Suggested Anti-MMD2 Antibody Titration: 0.2-1 ug/ml; Positive Control: Human brain