

Product datasheet for **TA334994**

C1orf43 Rabbit Polyclonal Antibody

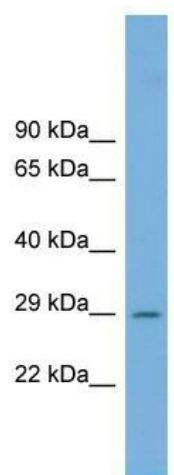
Product data:

Product Type:	Primary Antibodies
Applications:	WB
Recommended Dilution:	WB
Reactivity:	Human
Host:	Rabbit
Isotype:	IgG
Clonality:	Polyclonal
Immunogen:	The immunogen for anti-C1orf43 antibody: synthetic peptide directed towards the middle region of human C1orf43. Synthetic peptide located within the following region: YQEALSELATAVKARIGSSQRHHQSAAKDLTQSPEVSPPTTIQVTYLPSSQ
Formulation:	Liquid. Purified antibody supplied in 1x PBS buffer with 0.09% (w/v) sodium azide and 2% sucrose. <i>Note that this product is shipped as lyophilized powder to China customers.</i>
Purification:	Affinity Purified
Conjugation:	Unconjugated
Storage:	Store at -20°C as received.
Stability:	Stable for 12 months from date of receipt.
Predicted Protein Size:	29 kDa
Gene Name:	chromosome 1 open reading frame 43
Database Link:	NP_001092086 Entrez Gene 25912 Human Q9BWL3
Background:	The function of this protein remains unknown.
Synonyms:	HSPC012; NICE-3; NS5ATP4; S863-3
Note:	Immunogen Sequence Homology: Human: 100%; Dog: 93%; Pig: 93%; Rat: 93%; Horse: 93%; Mouse: 93%; Bovine: 93%; Rabbit: 93%; Guinea pig: 93%
Protein Families:	Transmembrane



[View online »](#)

Product images:



WB Suggested Anti-C1orf43 Antibody Titration:
0.2-1 ug/ml; Positive Control: Human Muscle